

2020 NEW PRODUCTS

GOLD CLASS PAGES 6-7



15085-201 **MINI CROOKED RIVER™**
P.6

BLUE CLASS PAGES 10-39



535-2 **BUGOUT**
P.25



533 **MINI BUGOUT**
P.26



601 **TENGU FLIPPER**
P.35

BLACK CLASS PAGES 52-91



3400 **AUTOCRAT® FAMILY**
P.52



8551 **MEDIATOR™**
P.55



570-1 **PRESIDIO**
P.67



537 **BAILOUT® FAMILY**
P.71



391 **SOCP TACTICAL FOLDER™**
P.80

HOW TO CHOOSE YOUR BENCHMADE KNIFE

1 ACTIVITY

Outdoor, tactical, every day use—there are many uses for a knife, and some knives are better for certain activities than others.

HOW WILL YOU USE YOUR KNIFE?



TACTICAL Designed for hard, immediate use, these high-strength knives feature robust mechanisms for situations where performance is a must.



RESCUE For critical situations. Gloved hands and the need to cut pliable materials are considerations in the design of these knives.



EVERY DAY Not obtrusive or uncomfortable in slacks or shorts; just convenient and well fitted to your general needs.



OUTDOOR From water to woods, backpacking trips to car camping, kayaking to fly-fishing, these versatile cutting tools can be used for many tasks.



HUNTING Knives are a critical component of a successful hunt. These are the most advanced hunting knives ever made.



SURVIVAL Things can happen unexpectedly for any adventurer. These knives have been built for the unexpected.

KEY KNIFE FEATURES



AXIS® The AXIS® lock is truly ambidextrous and extremely strong.



Option Lock When versatility is key, the patent-pending OPTION™ lock gives the advantage of having two different blades using the same mechanism, without compromising lockup strength or ease of use.



Ambidextrous Can be used equally well with either hand.



Reversible Clip The pocket clip can be removed and placed in alternate locations on the handle.



MOLLE® Compatible A versatile attachment system designed for kitting military equipment.



LifeSharp: Service and Warranty Our industry-leading lifetime warranty and product service program. For more detailed information, visit pages 102 and 107.

2 MECHANISM

We offer five primary actions: manual-opening, assisted-opening, automatic-opening, fixed blade and Bali-Song®. If you're a mountain climber, you may want an assist. If you're a sportsman, a fixed blade may be the right choice. Whatever the case, consider which mechanism type is optimal for your needs. Mechanisms like the AXIS® lock deliver manual opening, assisted opening and automatic opening. Others, like the monolock, deliver only manual opening. For detailed information on our mechanisms, visit page 104.

ACTIONS

Manual-opening "Manuals" must be opened 100%, from the closed position to the open position, by the user.

Assisted-opening "Assists" have a spring that encourages the blade into the open position once the user pushes the blade manually beyond a certain point.

Automatic-opening "Autos" have a button or other actuation switch that

mechanically fires the blade open without the user directly manipulating the blade.

Fixed Blade These knives are permanently open and almost always come with a sheath to protect the edge.

Bali-Song® "Balis" or "butterfly knives" open and close by way of two handles that rotate around the front and back of the blade.

3 BLADE STYLE

While the cutting edge does the work, the edge is applied to the cutting surface in different ways depending on the shape of the blade. Blade shapes with larger radiuses may be optimal for hunting, while blade shapes with hard angles, like the tanto, may be better for tactical applications.

SHAPES



Clip-point Blade contains a sharp beak, typically forward of the mid-point, as if the tip has been "clipped off."



Sheepsfoot The spine of the blade "rolls" into the tip, creating a more rounded end to discourage puncturing.



Drop-point Drops off the spine to the top. Tip height is typically below the center line on the blade.



Wharncliffe Similar in shape to the sheepsfoot with a spine that 'rolls' into the tip earlier. This blade has a completely straight edge.



Tanto This shape is easily identified by the angular lines. The knife edge is flat and transitions with a hard break in the angle from the tip to the primary edge.



Spear-point Must be symmetrical considering the blade profile. *Traditionally, spear-points are double-sided, but those knives are more specifically referred to as daggers.



Reverse Tanto Defined by the bevel creating an upside-down tanto profile, adding weight forward on the blade.



Weehawk Characterized by a sweeping edge and spine radius that tapers to the tip and handle.



Opposing Bevel Design features a non-uniform blade geometry that creates an offset pry-tip, while maintaining a consistent chisel grind on the cutting edge.

CONFIGURATION CODES (INSIDE THE MODEL NUMBERS)

BLADE VARIATIONS

- None** No coating, no serrations
- S** Serrations, no coating
- BK** Black coating, no serrations
- SBK** Serrations and black coating
- DLC** Diamond-like-Carbon coating
- GY** Gray coating, no serrations
- SGY** Serrations and gray coating

HANDLE

- ORG** Orange
 - OD** Olive Drab
 - SN** Sand
 - PNK** Pink
 - YEL** Yellow
 - BLU** Blue
 - GRY** Gray
- *-1, -2, etc. typically indicate handle material variations

4 BLADE STEEL

Steel composition can mean the difference between one sharp cut and a thousand. There are many types of steel, and additional factors that play into the right kind of steel for your usage. For instance, the way some steels are heat-treated plays a critical role in a knife's performance.

PROPERTIES

Edge Retention

How long a blade can maintain its sharpened edge.

Strength

Maximum stress withstood before a blade breaks or fails.

Corrosion Resistance

Resistance of a blade to oxidization and chemical attack.

Toughness

Resistance of a blade to fracture and chipping.

For more detailed information, visit page 105 or go to benchmade.com.

GOLD

CLASS





319-201

MINI CROOKED RIVER® NEW

BENCHMADE DESIGN • U.S.A.



15085-201



Ain't nothing crooked about it.
Honest and intentional craftsmanship.

MECHANISM AXIS® lock

BLADE STYLE Clip Point

BLADE STEEL Vinland™ pattern Damasteel®

HANDLE Marbled carbon fiber with Raffir®
Brass Yellow Moon inlays

POCKET CLIP Deep carry

EXTRA Smoke gray PVD coated liners
and clip; Brass thumb lug, barrel spacers
and pivot ring; DLC coated Axis bar,
pivot, and screw



15085-201

BLADE LENGTH	3.40" (8.64cm)
BLADE THICKNESS	0.114" (2.896mm)
OPEN	7.89" (20.04cm)
CLOSED	4.50" (11.43cm)
WEIGHT	3.22oz (91.29g)
HANDLE THICKNESS	0.52" (13.21mm)

CONFIGURATION/MSRP

15085-201	\$800
-----------	-------

1500-191 CIGAR CUTTER LIMITED

BENCHMADE DESIGN • U.S.A.



The metallic mesh embedded in the custom resin material emulates the wisping smoke from your favorite cigar. Available through July 2020.

MECHANISM Auto Axis ®

BLADE STYLE Guillotine

BLADE STEEL CPM-S90V super premium stainless steel (59-61HRC)

HANDLE Raffir® Noble Black Waves - Brass & Bronze - Resin Composite and smoked gray PVD liners

SHEATH Premium Leather pouch w/ blue stitching

EXTRA Black G10 Spacer; DLC coated lock bar; 60 Ring Gauge



1500-191

RING GAUGE	60
BLADE THICKNESS	0.09" (2.286mm)
OPEN	4.185" (10.63cm)
CLOSED	4.185" (10.63cm)
WEIGHT	4.02oz (113.97g)
HANDLE THICKNESS	0.515" (13.08mm)

CONFIGURATION/MSRP

1500-191	\$450
----------	-------

BLUE

CLASS





87 Ti BALI-SONG®

BENCHMADE DESIGN • U.S.A.



The past inspires the future, and while it all started in 1987, nothing about this billet titanium Bali-Song® is old-school.

MECHANISM Bali-Song® with magnetic latch-lock

BLADE STYLE Wharncliffe

BLADE STEEL CPM-S30V premium stainless steel (58-60HRC)

HANDLE Bead Blasted, single-piece billet titanium

EXTRA Thrust-bearing washers, custom hardware and patent-pending magnetic latch

SHEATH Gray nylon with multiple carry options



87

Sheath included

87

BLADE LENGTH	4.50" (11.43cm)
BLADE THICKNESS	0.124" (3.150mm)
OPEN	10.00" (25.40cm)
CLOSED	5.50" (13.97cm)
WEIGHT	5.37oz (152.24g)
HANDLE THICKNESS	0.46" (11.684mm)
SHEATH WEIGHT	0.66oz (18.71g)

CONFIGURATION/MSRP

87

\$650

62 **BALI-SONG**[®]

BENCHMADE DESIGN • U.S.A.



Based on the classic Bali—
with crafted stainless steel handles.

MECHANISM Bali-Song[®] with T-latch

BLADE STYLE 62: Weehawk

BLADE STEEL D2 tool steel (60-62HRC)

HANDLE Hand-finished, machined
stainless steel

SHEATH Nylon



62

Sheath included

62

BLADE LENGTH	4.25" (10.80cm)
BLADE THICKNESS	0.125" (3.175mm)
OPEN	9.20" (23.37cm)
CLOSED	5.27" (13.39cm)
WEIGHT	6.33oz (179.45g)
HANDLE THICKNESS	0.48" (12.192mm)

CONFIGURATIONS/MSRP

62	WEEHAWK	\$475
----	---------	-------

51 MORPHO®

BENCHMADE DESIGN • U.S.A.



A lightweight Bali that brings modern style to a classic.

MECHANISM Bali-Song® with Nitrous® latch-lock

BLADE STYLE Drop-point

BLADE STEEL D2 tool steel (60-62HRC)

HANDLE Black skeletonized G10 with blue anodized, jeweled titanium liners

POCKET CLIP Tip-up blue anodized titanium



51

51

BLADE LENGTH	4.25" (10.80cm)
BLADE THICKNESS	0.100" (2.540mm)
OPEN	9.35" (23.75cm)
CLOSED	5.40" (13.72cm)
WEIGHT	3.30oz (93.55g)
HANDLE THICKNESS	0.47" (11.938mm)

CONFIGURATIONS/MSRP

51 \$350

490 **ARCANE**[®]

BENCHMADE DESIGN • U.S.A.



The speed and function of **AXIS[®] Assist**; the convenience of a **flipper**.

MECHANISM **AXIS[®] Assist** flipper with integrated safety

BLADE STYLE Drop-point

BLADE STEEL CPM-S90V super premium stainless steel (59-61HRC)

HANDLE Black anodized 7075-T6 billet aluminum

POCKET CLIP Reversible tip-up silver deep-carry



490

490

BLADE LENGTH	3.25" (8.26cm)
BLADE THICKNESS	0.090" (2.286mm)
OPEN	7.77" (19.74cm)
CLOSED	4.52" (11.48cm)
WEIGHT	2.88oz (81.65g)
HANDLE THICKNESS	0.48" (12.192mm)

CONFIGURATIONS/MSRP

490

\$270

495 VECTOR®

BENCHMADE DESIGN • U.S.A.



G10 scales, stainless steel liners and expressive styling take the AXIS® Assist flipper in a new direction.

MECHANISM AXIS® Assist flipper with integrated safety

BLADE STYLE Spear-point

BLADE STEEL CPM-S30V premium stainless steel (58-60HRC)

HANDLE Black contoured and textured G10 with stainless steel liners

POCKET CLIP Reversible tip-up silver deep-carry

EXTRA Stainless steel barrel spacers



495

495

BLADE LENGTH	3.60" (9.14cm)
BLADE THICKNESS	0.100" (2.540mm)
OPEN	8.42" (21.39cm)
CLOSED	4.82" (12.24cm)
WEIGHT	4.11oz (116.52g)
HANDLE THICKNESS	0.60" (15.240mm)

CONFIGURATION/MSRP

495

\$250

496 VECTOR®

BENCHMADE DESIGN • U.S.A.



A detail-laden **AXIS® Assist** flipper that oozes style at every angle.

MECHANISM AXIS® Assist flipper with integrated safety

BLADE STYLE Drop point with compound grind

BLADE STEEL CPM-20CV premium stainless steel (59-61HRC)

HANDLE Milled, contoured anodized aluminum bolsters; smooth milled, contoured G10 handle scales

POCKET CLIP Deep carry

EXTRA Compound grind;
Olive Drab G10 with white G10 pinstripe layer



496

496

BLADE LENGTH	3.60" (9.14cm)
BLADE THICKNESS	0.10" (2.540mm)
OPEN	8.42" (21.39cm)
CLOSED	4.82" (12.24cm)
WEIGHT	4.5oz (127.57g)
HANDLE THICKNESS	0.60" (15.240mm)

CONFIGURATION/MSRP

496

\$335

477/477-1



470-1



Strong, versatile, and good-looking.

MECHANISM AXIS® Assist with integrated safety

BLADE STYLE Drop-point

BLADE STEEL CPM-S30V premium stainless steel (58-60HRC)

HANDLE 477: Black anodized, 6061-T6 billet aluminum; 477-1: Aqua anodized, 6061-T6 billet aluminum; 470-1: Black anodized, 7075-T6 billet aluminum

POCKET CLIP Reversible tip-up silver deep-carry



	477/477-1	470-1
BLADE LENGTH	3.45" (8.76cm)	3.00" (7.62cm)
BLADE THICKNESS	0.100" (2.540mm)	0.090" (2.286mm)
OPEN	8.00" (20.32cm)	6.90" (17.53cm)
CLOSED	4.55" (11.56cm)	3.90" (9.91cm)
WEIGHT	3.95oz (111.98g)	2.20oz (62.37g)
HANDLE THICKNESS	0.52" (13.208mm)	0.45" (11.430mm)

CONFIGURATIONS/MSRP

470-1	\$225
477	\$250
477-1	\$250

1000001 VOLLI

BENCHMADE DESIGN • U.S.A.



Utilizes the same **AXIS® Assist** as the **Barrage®** series, but with a broader blade and a slimmer handle with **G10** scales.

MECHANISM **AXIS® Assist** with integrated safety

BLADE STYLE Drop-point

BLADE STEEL CPM-S30V premium stainless steel (58-60HRC)

HANDLE Black contoured and textured **G10** with stainless steel liners

POCKET CLIP Reversible tip-up black oxide split-arrow



1000001

1000001

BLADE LENGTH	3.26" (8.28cm)
BLADE THICKNESS	0.100" (2.540mm)
OPEN	7.68" (19.51cm)
CLOSED	4.42" (11.23cm)
WEIGHT	4.28oz (121.34g)
HANDLE THICKNESS	0.56" (14.224mm)

CONFIGURATIONS/MSRP

1000001	\$215
---------	-------

BARRAGE® FAMILY

OSBORNE DESIGN • U.S.A.



580/585



583



Quick, one-handed opening for righties or lefties.

MECHANISM AXIS® Assist with integrated safety

BLADE STYLE 580 & 585: Drop-point; 583: Tanto

BLADE STEEL 154CM stainless steel (58-61HRC)

HANDLE Black Valox® with stainless steel liners

POCKET CLIP Reversible tip-up black oxide split-arrow



583SBK

580

585
Mini

	580	583	585
BLADE LENGTH	3.60" (9.14cm)	3.60" (9.14cm)	2.91" (7.39cm)
BLADE THICKNESS	0.121" (3.073mm)	0.121" (3.073mm)	0.100" (2.540mm)
OPEN	8.35" (21.21cm)	8.35" (21.21cm)	6.91" (17.55cm)
CLOSED	4.75" (12.07cm)	4.75" (12.07cm)	4.00" (10.16cm)
WEIGHT	4.31oz (122.19g)	4.51oz (127.86g)	3.40oz (96.39g)
HANDLE THICKNESS	0.65" (16.510mm)	0.65" (16.510mm)	0.57" (14.478mm)

CONFIGURATIONS/MSRP

580		\$160
580S	SERR	\$160
583BK	BLACK	\$175
583SBK	SERR BLACK	\$175
585		\$150
585S	SERR	\$150
585BK	BLACK	\$165

581 BARRAGE®

OSBORNE DESIGN • U.S.A.



The dressed-up handle and enhanced steel offer premium performance.

MECHANISM AXIS® Assist with integrated safety

BLADE STYLE Drop-point

BLADE STEEL M390 super premium stainless steel (58-61HRC)

HANDLE Black G10 with aluminum bolsters and stainless steel liners

POCKET CLIP Reversible tip-up black oxide split-arrow



581

CONFIGURATION/MSRP

581	\$260
-----	-------

581	
BLADE LENGTH	3.60" (9.14cm)
BLADE THICKNESS	0.121" (3.073mm)
OPEN	8.35" (21.21cm)
CLOSED	4.75" (12.07cm)
WEIGHT	5.20oz (147.42g)
HANDLE THICKNESS	0.65" (16.510mm)

G10 BARRAGE® FAMILY

OSBORNE DESIGN • U.S.A.



580-2/585-2



Gray G10 and upgraded blade steel offer enhanced performance.

MECHANISM AXIS® Assist with integrated safety

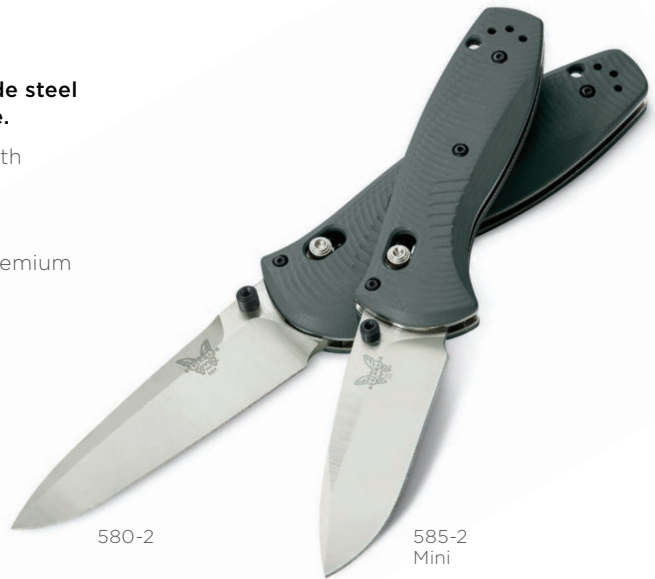
BLADE STYLE Drop-point

BLADE STEEL CPM-S30V premium stainless steel (58-60HRC)

HANDLE Gray textured G10 with stainless steel liners

POCKET CLIP Reversible tip-up black oxide split-arrow

EXTRA Black oxide metal backspacer, single barrel spacer



580-2

585-2 Mini

	580-2	585-2
BLADE LENGTH	3.60" (9.14cm)	2.91" (7.39cm)
BLADE THICKNESS	0.121" (3.073mm)	0.100" (2.540mm)
OPEN	8.35" (21.21cm)	6.91" (17.55cm)
CLOSED	4.75" (12.07cm)	4.00" (10.16cm)
WEIGHT	4.94oz (140.05g)	3.76oz (106.59g)
HANDLE THICKNESS	0.62" (15.758mm)	0.57" (14.478mm)

CONFIGURATIONS/MSRP

580-2	\$210
585-2	\$200

590/595



Dual durometer handles greatly increase grip performance while maintaining strength on this fast-action assist.

MECHANISM AXIS® Assist with integrated safety

BLADE STYLE Drop-point

BLADE STEEL CPM-S30V premium stainless steel (58-60HRC)

HANDLE Dark gray Grivory® and black overmolded Versaflex®

POCKET CLIP 590: Reversible tip-up black oxide deep-carry; 595: Reversible tip-up mini black oxide deep-carry



	590	595
BLADE LENGTH	3.70" (9.40cm)	3.11" (7.90cm)
BLADE THICKNESS	0.120" (3.048mm)	0.100" (2.540mm)
OPEN	8.52" (21.64cm)	7.18" (18.22cm)
CLOSED	4.83" (12.26cm)	4.07" (10.33cm)
WEIGHT	4.59oz (130.12g)	3.31oz (93.84g)
HANDLE THICKNESS	0.70" (17.780mm)	0.63" (16.002mm)

CONFIGURATIONS/MSRP		
590		\$170
590BK	BLACK	\$185
590SBK	SERR BLACK	\$185
595		\$160
595BK	BLACK	\$175

591BK BOOST®

BENCHMADE DESIGN • U.S.A.



Meant for your pocket,
at home in your tool box.

MECHANISM AXIS® Assist
with integrated safety

BLADE STYLE Opposing bevel

BLADE STEEL CPM-3V super tough tool
steel (60-62HRC)

HANDLE Red Grivory® and black
overmolded Versaflex®

POCKET CLIP Reversible tip-up
black oxide deep-carry



591BK

591BK

BLADE LENGTH	3.44" (8.74cm)
BLADE THICKNESS	0.12" (3.048mm)
OPEN	8.26" (20.98cm)
CLOSED	4.83" (12.27cm)
WEIGHT	4.49oz (127.29g)
HANDLE THICKNESS	0.70" (17.78mm)

CONFIGURATIONS/MSRP

591BK	\$190
-------	-------

FREEK® FAMILY
BENCHMADE DESIGN • U.S.A.



560/565



Dual durometer handles afford strength, comfort, and positive grip to this versatile folder.

MECHANISM AXIS® lock

BLADE STYLE Drop-point

BLADE STEEL CPM-S30V premium stainless steel (58-60HRC)

HANDLE Warm gray Grivory® and black overmolded Versaflex®

POCKET CLIP Reversible tip-up black oxide split-arrow



	560	565
BLADE LENGTH	3.60" (9.14cm)	3.00" (7.62cm)
BLADE THICKNESS	0.114" (2.896mm)	0.104" (2.642mm)
OPEN	8.46" (21.49cm)	7.05" (17.91cm)
CLOSED	4.86" (12.34cm)	4.05" (10.29cm)
WEIGHT	3.72oz (105.46g)	2.57oz (72.86g)
HANDLE THICKNESS	0.65" (16.510mm)	0.59" (14.986mm)

CONFIGURATIONS/MSRP

560	\$145
560SBK	SERR BLACK \$160
565	\$135
565BK	BLACK \$150

560-1 FREEK®
BENCHMADE DESIGN • U.S.A.



Form and function in the same package.

MECHANISM AXIS® lock

BLADE STYLE Drop-point

BLADE STEEL CPM-M4 super steel (62-64HRC)

HANDLE Gray and black textured G10 with red base layer

POCKET CLIP Reversible tip-up black oxide split-arrow

EXTRA Red anodized aluminum barrel spacers



	560-1
BLADE LENGTH	3.60" (9.14cm)
BLADE THICKNESS	0.114" (2.896mm)
OPEN	8.46" (21.49cm)
CLOSED	4.86" (12.34cm)
WEIGHT	4.30oz (121.90g)
HANDLE THICKNESS	0.62" (15.75mm)

CONFIGURATIONS/MSRP

560BK-1	BLACK \$225
560SBK-1	SERR BLACK \$225

GRIPTILIAN® FAMILY

PARDUE DESIGN • U.S.A.



550/550-1

551/551-1/553



More shapes, sizes, and color options than any other Benchmade family.

MECHANISM AXIS® lock

BLADE STEEL CPM-S30V premium stainless steel (58-60HRC); 550-1/551-1: CPM-20CV premium stainless steel (59-61HRC); N680 ultra stainless steel (57-59HRC)

BLADE STYLE 550: Sheepfoot; 551: Drop-point; 553: Tanto

HANDLE Grivory with stainless steel liners; 550-1/551-1: Gray and blue layered G10

POCKET CLIP Reversible tip-up standard black oxide; 550-1/551-1: reversible tip-up black oxide deep-carry;



550-1

551-1

553SBKSN-S30V

551-ORG-S30V

550-S30V

CONFIGURATIONS/MSRP

550-S30V		\$130
550BK-S30V	BLACK	\$145
550SBK-S30V	SERR BLACK	\$145
550-1		\$220
551-S30V		\$130
551S-S30V	SERR	\$130
551BK-S30V	BLACK	\$145
551SBK-S30V	SERR BLACK	\$145
551BKOD-S30V	BLACK	\$145
551SBKOD-S30V	SERR BLACK	\$145
551BKSN-S30V	BLACK	\$145
551SBKSN-S30V	SERR BLACK	\$145
551-ORG-S30V		\$130
551-1		\$220
553-S30V		\$130
553SBK-S30V	SERR BLACK	\$145
553SBKSN-S30V	SERR BLACK	\$145

550/551/553

550-1/551-1

BLADE LENGTH	3.45" (8.76cm)	3.45" (8.76cm)
BLADE THICKNESS	0.115" (2.921mm)	0.115" (2.921mm)
OPEN	8.07" (20.50cm)	8.07" (20.50cm)
CLOSED	4.62" (11.73cm)	4.62" (11.73cm)
WEIGHT	3.79oz (107.44g) 550	4.13oz (117.08g) 550-1
	3.88oz (110.00g) 551	4.17oz (118.22g) 551-1
	3.89oz (110.28g) 553	
HANDLE THICKNESS	0.64" (16.256mm)	0.61" (15.494mm)

MINI GRIPTILIAN® FAMILY

PARDUE DESIGN • U.S.A.



555/555-1



556/556-1



557



More shapes, sizes, and color options than any other Benchmade family.

MECHANISM AXIS® lock

BLADE STEEL CPM-S30V premium stainless steel (58-60HRC); 555-1/556-1: CPM-20CV premium stainless steel (59-61HRC)

BLADE STYLE 555: Sheepfoot; 556: Drop-point; 557: Tanto

HANDLE Grivory with stainless steel liners; 555-1/556-1: Gray and blue layered G10

POCKET CLIP Reversible tip-up standard black oxide; 555-1/556-1: reversible tip-up black oxide deep-carry



555-S30V

557SBK-S30V

555-1

556-1

	555/556/557	555-1/556-1
BLADE LENGTH	2.91" (7.39cm)	2.91" (7.39cm)
BLADE THICKNESS	0.100" (2.540mm)	0.100" (2.540mm)
OPEN	6.78" (17.22cm)	6.78" (17.22cm)
CLOSED	3.87" (9.83cm)	3.87" (9.83cm)
WEIGHT	2.68oz (75.98g) 555 2.81oz (79.66g) 556 2.79oz (79.10g) 557	2.88oz (81.65g) 555-1 2.90oz (82.21g) 556-1
HANDLE THICKNESS	0.51" (12.954mm)	0.55" (13.970mm)

CONFIGURATIONS/MSRP

555-S30V		\$120
555BK-S30V	BLACK	\$135
555SBKOD-S30V	SERR BLACK	\$130
555-1		\$205
556-S30V		\$120
556S-S30V	SERR	\$120
556BK-S30V	BLACK	\$135
556SBK-S30V	SERR BLACK	\$135
556BKOD-S30V	BLACK	\$135
556SBKOD-S30V	SERR BLACK	\$135
556-BLU-S30V		\$120
556-PNK-S30V		\$120
556-YEL-S30V		\$120
556-1		\$205
557-S30V		\$120
557SBK-S30V	SERR BLACK	\$135

535 **BUGOUT**[®] FAMILY

BENCHMADE DESIGN • U.S.A.



535/535-1 535BK-2



Sometimes being versatile means packing light.

MECHANISM AXIS[®] lock

BLADE STYLE Drop-point

BLADE STEEL CPM-S30V premium stainless steel (58-60HRC)

HANDLE 535: Textured blue Grivory[®]; 535GRY-1: Textured ranger green Grivory[®], 535BK-2: Black CF-Elite™

POCKET CLIP Reversible tip-up mini deep-carry

EXTRA 535: Blue anodized thumb studs and barrel spacers; 535GRY-1: Tan anodized thumb studs, barrel spacers and a PVD coated blade, DLC coated titanium lock bar, 535BK-2: Dark gray anodized aluminum standoffs; titanium AXIS bar with DLC coating; Black oxide hardware and liners



535

535SGRY-1



535BK-2

	535/535-1	535-2	CONFIGURATIONS/MSRP	
BLADE LENGTH	3.24" (8.23cm)	3.24" (8.23cm)	535	\$150
BLADE THICKNESS	0.090" (2.286mm)	0.090" (2.286mm)	535S SERR	\$150
OPEN	7.46" (18.95cm)	7.46" (18.95cm)	535GRY-1	\$170
CLOSED	4.22" (10.72cm)	4.22" (10.72cm)	535SGRY-1 SERR	\$170
WEIGHT	1.85oz (52.45g)	1.8oz (51.03g)	535BK-2	\$170
HANDLE THICKNESS	0.42" (10.668mm)	0.42" (10.67mm)	535SBK-2	\$170

533 MINI BUGOUT® NEW

BENCHMADE DESIGN • U.S.A.



Small enough for a mint tin,
big enough for adventure.

MECHANISM AXIS® lock

BLADE STYLE Drop-point

BLADE STEEL CPM-S30V premium
stainless steel (58-60HRC)

HANDLE 533: Orange Grivory®;
533BK-1 White Grivory®

POCKET CLIP Mini deep carry

EXTRA Ultra-light weight; Large lanyard
hole, DLC coated Titanium lock bar;
533BK-1: DLC coated blade



533

533BK-1

533

BLADE LENGTH	2.82" (7.16cm)
BLADE THICKNESS	0.09" (2.286mm)
OPEN	6.49" (16.48cm)
CLOSED	3.704" (9.41cm)
WEIGHT	1.5oz (42.52g)
HANDLE THICKNESS	0.412" (10.46mm)

CONFIGURATIONS/ MSRP

533	SATIN	\$140
533BK-1	BLACK	\$160

940 FAMILY

OSBORNE DESIGN • U.S.A.



940/943



Highly regarded as one of the most quintessential EDCs of all time.

MECHANISM AXIS® lock

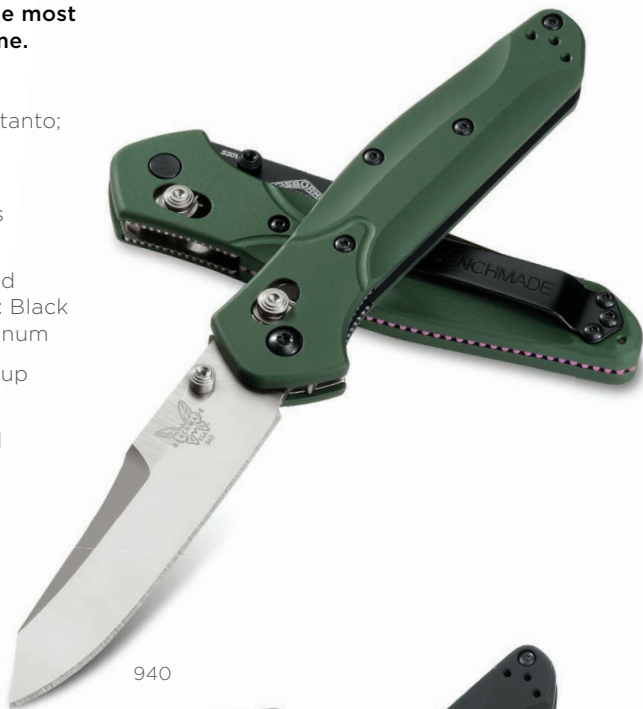
BLADE STYLE 940: Reverse tanto; 943: Clip-point

BLADE STEEL 940 & 943: CPM-S30V premium stainless steel (58-60HRC)

HANDLE 940: Green anodized 6061-T6 billet aluminum; 943: Black anodized 6061-T6 billet aluminum

POCKET CLIP Reversible tip-up standard black oxide

EXTRA 940: Purple anodized titanium backspacer; 943: Blue anodized titanium backspacer



940



943BK

	940	943
BLADE LENGTH	3.40" (8.64cm)	3.40" (8.64cm)
BLADE THICKNESS	0.115" (2.921mm)	0.115" (2.921mm)
OPEN	7.87" (19.99cm)	7.87" (19.99cm)
CLOSED	4.47" (11.35cm)	4.47" (11.35cm)
WEIGHT	2.90oz (82.21g)	2.90oz (82.21g)
HANDLE THICKNESS	0.41" (10.414mm)	0.41" (10.414mm)

CONFIGURATIONS/MSRP

940		\$220
940BK	BLACK	\$235
943		\$220
943BK	BLACK	\$235

940 FAMILY

OSBORNE DESIGN • U.S.A.



940-1/940-2



Barrel spacers and composite handles make these 940s lighter than ever.

MECHANISM AXIS® lock

BLADE STYLE Reverse tanto

BLADE STEEL 940-1: CPM-S90V super premium stainless steel (59-61HRC); 940-2: CPM-S30V premium stainless steel (58-60HRC)

HANDLE 940-1: Carbon fiber with stainless steel liners; 940-2: Black milled G10 with stainless steel liners

POCKET CLIP Reversible tip-up standard black oxide

EXTRA 940-1: Blue anodized barrel spacers; 940-2: Green anodized barrel spacers



940-1



940-2

	940-1	940-2
BLADE LENGTH	3.40" (8.64cm)	3.40" (8.64cm)
BLADE THICKNESS	0.115" (2.921mm)	0.115" (2.921mm)
OPEN	7.87" (19.99cm)	7.87" (19.99cm)
CLOSED	4.47" (11.35cm)	4.47" (11.35cm)
WEIGHT	2.44oz (69.17g)	2.65oz (75.13g)
HANDLE THICKNESS	0.44" (11.176mm)	0.44" (11.176mm)

CONFIGURATIONS/MSRP

940-1	\$320
940-2	\$205

781 ANTHEM®

BENCHMADE DESIGN • U.S.A.



The first-ever single-piece, billet titanium AXIS® knife. Cue the music.

MECHANISM AXIS® lock

BLADE STYLE Drop-point

BLADE STEEL CPM-20CV premium stainless steel (59-61HRC)

HANDLE Chevron-patterned, single piece billet titanium, bead-blasted with a subtle patina-anodized finish

POCKET CLIP Reversible tip-up custom chevron-patterned and anodized titanium

EXTRA Thrust-bearing washers



781

781

BLADE LENGTH	3.50" (8.89cm)
BLADE THICKNESS	0.112" (2.845mm)
OPEN	8.06" (20.47cm)
CLOSED	4.56" (11.58cm)
WEIGHT	3.66oz (103.76g)
HANDLE THICKNESS	0.43" (10.922mm)

CONFIGURATIONS/MSRP

781

\$525



Shane Sibert's MPR,
reinvented in a new micro format.

MECHANISM Monolock

BLADE STYLE Drop-point

BLADE STEEL CPM-20CV premium
stainless steel (59-61HRC)

HANDLE Sandblasted machined titanium

POCKET CLIP Tip-up custom titanium clip
with blue sapphire titanium oxide coating

EXTRA Blue sapphire titanium oxide coated
stainless steel barrel spacers and pivot
screw; stainless steel pivot rings; thrust-
bearing washers



756

756

BLADE LENGTH	1.87" (4.75cm)
BLADE THICKNESS	0.124" (3.15mm)
OPEN	4.83" (12.27cm)
CLOSED	2.84" (7.21cm)
WEIGHT	3.51oz (99.51g)
HANDLE THICKNESS	0.45" (11.430mm)

CONFIGURATION/MSRP

756	\$425
-----	-------

485 VALET

BENCHMADE DESIGN • U.S.A.



A stylish, comfortable AXIS® gent knife.

MECHANISM AXIS® lock

BLADE STYLE Drop-point

BLADE STEEL M390 super premium stainless steel (58-61HRC)

HANDLE Gray contoured G10 with stainless steel liners

POCKET CLIP Reversible tip-up silver deep-carry

EXTRA Machined G10 backspacer



485

485

BLADE LENGTH	2.96" (7.52cm)
BLADE THICKNESS	0.100" (2.540mm)
OPEN	6.69" (16.99cm)
CLOSED	3.73" (9.47cm)
WEIGHT	2.18oz (61.80g)
HANDLE THICKNESS	0.45" (11.430mm)

CONFIGURATIONS/MSRP

485

\$205

NAKAMURA AXIS® FAMILY

NAKAMURA DESIGN • U.S.A.



484/484-1



Brings together the best of both worlds: detailed design and functional strength.

MECHANISM AXIS® lock

BLADE STYLE Drop-point

BLADE STEEL 484: M390 super premium stainless steel (58-61HRC); 484-1: CPM-S90V super premium stainless steel (59-61HRC)

HANDLE 484: Black contoured G10 with stainless steel liners; 484-1: Contoured carbon fiber with stainless steel liners

POCKET CLIP 484: Reversible tip-up silver split-arrow; 484-1: Reversible tip-up black oxide split-arrow

EXTRA 484: Stainless steel pivot bushing and barrel spacers; 484-1: Blue anodized aluminum pivot bushing and barrel spacers



484-1



484

484

484-1

BLADE LENGTH	3.08" (7.82cm)	3.08" (7.82cm)
BLADE THICKNESS	0.114" (2.896mm)	0.114" (2.896mm)
OPEN	7.03" (17.86cm)	7.03" (17.86cm)
CLOSED	3.95" (10.03cm)	3.95" (10.03cm)
WEIGHT	3.52oz (99.79g)	3.28oz (92.99g)
HANDLE THICKNESS	0.57" (14.478mm)	0.57" (14.478mm)

CONFIGURATIONS/MSRP

484	\$230
484-1	\$320

486 **SAIBU**[®]
NAKAMURA DESIGN • U.S.A.



Saibu, Japanese for details. The latest Seiichi Nakamura collaboration is a showcase piece worthy of even the most discerning pocket.

MECHANISM AXIS[®] lock

BLADE STYLE Drop-point

BLADE STEEL CPM-20CV premium stainless steel (59-61HRC)

HANDLE Black contoured G10 with stabilized Cocobolo wood inlays

POCKET CLIP Reversible tip-up silver mini deep-carry

EXTRA Wood-accented thumb studs and custom metal backspacer



486

486

BLADE LENGTH	2.98" (7.57cm)
BLADE THICKNESS	0.114" (2.896mm)
OPEN	6.79" (17.25cm)
CLOSED	3.82" (9.70cm)
WEIGHT	2.70oz (76.57g)
HANDLE THICKNESS	0.48" (12.19mm)

CONFIGURATION/MSRP

486	\$270
-----	-------

318 / 318-2 319 / 319-2



Simple and practical, yet with the advanced performance you can expect from a Benchmade.

MECHANISM Slip-joint

BLADE STYLE 318/318-2: Clip-point;
319/319-2: Sheepsfoot

BLADE STEEL 318/319: CPM-S30V premium stainless steel (58-60HRC); 318-2/319-2: CPM-S90V super premium stainless steel (59-61HRC)

HANDLE 318/319: Olive drab canvas micarta; 318-2/319-2: Black carbon fiber handles with PVD coated stainless steel liners



319-2

318

CONFIGURATIONS/MSRP

318	\$150
318-2	\$240
319	\$150
319-2	\$240

	318	319	318-2	319-2
BLADE LENGTH	2.82" (7.16cm)	2.86" (7.26cm)	3.82" (7.16cm)	3.82" (7.16cm)
BLADE THICKNESS	0.090" (2.286mm)	0.090" (2.286mm)	0.090" (2.286mm)	0.090" (2.286mm)
OPEN	6.65" (16.89cm)	6.69" (16.99cm)	6.65" (16.89cm)	6.69" (16.99cm)
CLOSED	3.85" (9.78cm)	3.85" (9.78cm)	3.85" (9.78cm)	3.85" (9.78cm)
WEIGHT	2.28oz (64.64g)	2.32oz (65.77g)	2.28oz (64.64g)	2.32oz (65.77g)
HANDLE THICKNESS	0.40" (10.160mm)	0.40" (10.160mm)	0.40" (10.160mm)	0.40" (10.160mm)

601 TENGU FLIPPER® NEW

OESER DESIGN • U.S.A.



601



Our first collaboration with Jared Oeser is the synthesis of a timeless design and modern classic.

MECHANISM Liner Lock with Flipper

BLADE STYLE Tanto

BLADE STEEL CPM-20CV premium stainless steel (59-61HRC)

HANDLE Black contoured G10 w/white G10 base layer and decorative shield inlay

SLEEVE Black leather sleeve with white accent stitching

EXTRA G10 accent shield inlay and thrust bearing washers



601

Leather Sleeve
Included

601

BLADE LENGTH	2.77" (7.04cm)
BLADE THICKNESS	0.121" (3.073mm)
OPEN	6.61" (16.79cm)
CLOSED	3.85" (9.78cm)
WEIGHT	2.67oz (75.69g)
HANDLE THICKNESS	0.44" (11.18mm)
SHEATH WEIGHT	0.32oz (9.07g)

CONFIGURATIONS/MSRP

601

\$220

380 ALLER™

FAMIN & DEMONGIVERT DESIGN • U.S.A.



Six tools in one, small, package.

MECHANISM Friction folder, patent-pending

BLADE STYLE Sheepsfoot

BLADE STEEL CPM-S30V premium stainless steel (58-60HRC)

HANDLE Black G10 with blue base layer

POCKET CLIP Custom designed reversible and removable money clip

EXTRA Bottle opener, screwdriver/pry tip, and micro bit slot



380

380

BLADE LENGTH	1.60" (4.06cm)
BLADE THICKNESS	0.09" (2.286mm)
OPEN	4.48" (11.38cm)
CLOSED	3.30" (8.38cm)
WEIGHT	1.80oz (51.03g)
HANDLE THICKNESS	0.38" (9.65mm)

CONFIGURATION/MSRP

380

\$160

381 ALLER™ FUMÉE

FAMIN & DEMONGIVERT DESIGN • U.S.A.



Just when you thought we couldn't pack another feature into this miniaturized platform...

MECHANISM Friction folder, patent-pending

BLADE STYLE Guillotine

BLADE STEEL CPM-S30V premium stainless steel (58-60HRC)

HANDLE Richlite

POCKET CLIP Custom designed reversible and removable money clip

EXTRA 56 Ring Gauge cigar cutter; bottle opener; screwdriver/pry tip, and micro bit slot



381

381

BLADE LENGTH	1.60" (4.06cm)
BLADE THICKNESS	0.09" (2.286mm)
OPEN	4.48" (11.38cm)
CLOSED	3.30" (8.38cm)
WEIGHT	1.60oz (45.36g)
HANDLE THICKNESS	0.38" (9.65mm)

CONFIGURATION/MSRP

381	\$160
-----	-------

200 PUUKKO

BENCHMADE DESIGN • U.S.A.



Combining a classic Finnish silhouette with the modern performance you've come to expect.

MECHANISM Fixed blade

BLADE STYLE Drop-point

BLADE STEEL CPM-3V super tough tool steel (60-62HRC)

HANDLE Textured ranger green Santoprene®

SHEATH Black leather with ferro rod loop and dangler



	200
BLADE LENGTH	3.75" (9.53cm)
BLADE THICKNESS	0.140" (3.556mm)
OPEN	8.25" (20.96cm)
WEIGHT	4.51oz (127.86g)
HANDLE THICKNESS	0.80" (20.32mm)
SHEATH WEIGHT	2.65oz (75.13g)

CONFIGURATION/MSRP
200 \$150

BUSHCRAFTER FAMILY

SIBERT DESIGN • U.S.A.



BLUE CLASS

162



162-1



Unsurpassed reliability for planned (or unplanned) adventures.

MECHANISM Fixed blade

BLADE STYLE Drop-point

BLADE STEEL CPM-S30V premium stainless steel (58-60HRC)

HANDLE 162: Hand-blended green and red, contoured G10; 162-1: Hand-blended sand, contoured G10

SHEATH 162: Full-grain leather with belt loop and D-ring; 162-1: Molded Kydex® with reversible belt loop

EXTRA Pressed titanium handle tubing



162-1: A survival knife designed in partnership with the world's foremost explosive ordnance technicians. Start a signal fire or cut some C4. It's your call.



	162	162-1
BLADE LENGTH	4.40" (11.18cm)	4.40" (11.18cm)
BLADE THICKNESS	0.164" (4.166mm)	0.164" (4.166mm)
OVERALL LENGTH	9.15" (23.24cm)	9.15" (23.24cm)
WEIGHT	7.72oz (218.86g)	7.72oz (218.86g)
HANDLE THICKNESS	0.92" (23.368mm)	0.92" (23.368mm)
SHEATH WEIGHT	2.70oz (76.54g)	1.86oz (52.73g)

Sheath included. Additional sheaths available for purchase, \$30

CONFIGURATIONS/MSRP

162	GREEN	\$250
162-1	TAN	\$250

HUNT

SERIES





15200 ALTITUDE®

BENCHMADE DESIGN • U.S.A.



**Designed for backcountry adventure;
for the hunter who counts every ounce.
The ultimate lightweight hunting knife.**

MECHANISM Fixed blade

BLADE STYLE Drop-point

BLADE STEEL CPM-S90V super premium stainless steel (59-61HRC)

HANDLE DLC coated or orange cerakote with carbon fiber and G10 stacked micro-scales with anodized orange bushing

SHEATH 15200ORG: First Lite's proprietary Fusion® camo kydex; 15200DLC: Black Boltaron®



15200DLC

15200ORG



15200DLC



15200ORG

Sheath included

15200

BLADE LENGTH	3.08" (7.82cm)
BLADE THICKNESS	0.090" (2.286mm)
OVERALL LENGTH	7.38" (18.75cm)
WEIGHT	1.67oz (47.34g)
HANDLE THICKNESS	0.35" (8.890mm)
SHEATH WEIGHT	0.76oz (21.55g)

CONFIGURATIONS/MSRP

15200ORG	\$235
15200DLC	\$240

SADDLE MOUNTAIN SKINNER FAMILY

BENCHMADE DESIGN • U.S.A.



BENCHMADE HUNT

15001/15003



"With the Saddle Mountain Skinner I feel like I can break down game or fight off a bear."

—Nate Simmons, The Western Hunter

MECHANISM Fixed blade

BLADE STYLE 15001: Skinner; 15003: Skinner with hook

BLADE STEEL CPM-S30V premium stainless steel (58-60HRC)

HANDLE 15001-1: Gray and black contoured and textured G10; 15001-2 and 15003-2: Contoured stabilized wood

SHEATH 15001-1: Molded Kydex® with reversible belt loop; 15001-2 and 15003-2: Pressure-fit, rich leather with integrated guard



15003-2

15001-1

15001-1 (988687F)

15001-2 (988686F)
15003-2 (989251F)

Sheath included. Additional sheaths available for purchase, \$30

	15001	15003
BLADE LENGTH	4.17" (10.59cm)	4.17" (10.59cm)
BLADE THICKNESS	0.140" (3.556mm)	0.140" (3.556mm)
HOOK OPENING	-	0.375" (9.525mm)
OVERALL LENGTH	8.73" (22.17cm)	8.73" (22.17cm)
WEIGHT	5.13oz (145.43g) G10 4.65oz (131.83g) Wood	4.70oz (133.24g) Wood
HANDLE THICKNESS	0.58" (14.732mm)	0.58" (14.732mm)
SHEATH WEIGHT	1.85oz (52.45g) Kydex® 1.42oz (40.26g) Leather	1.42oz (40.26g) Leather

CONFIGURATIONS/MSRP		
15001-1	G10	\$165
15001-2	Wood	\$165
15003-2	Wood	\$175

15400 PARDUE HUNTER

PARDUE DESIGN • U.S.A.



An all-around hunting fixed blade built for the outdoors.

MECHANISM Fixed blade

BLADE STYLE Drop-point

BLADE STEEL CPM-S30V premium stainless steel (58-60HRC)

HANDLE Contoured olive drab and black layered linen micarta

SHEATH Pressure-fit rich leather with integrated guard



15400

15400

BLADE LENGTH	3.48" (8.84cm)
BLADE THICKNESS	0.132" (3.353mm)
OVERALL LENGTH	7.96" (20.22cm)
WEIGHT	5.08oz (144.02g)
HANDLE THICKNESS	0.57" (14.478mm)
SHEATH WEIGHT	2.02oz (57.27g)

CONFIGURATION/MSRP

15400

\$230

15016 HIDDEN CANYON HUNTER

BENCHMADE DESIGN • U.S.A.



A compact knife for those who are looking to save space, it's truly about as much knife as you'll ever need.

MECHANISM Fixed blade

BLADE STYLE Drop-point

BLADE STEEL CPM-S30V premium stainless steel (58-60HRC)

HANDLE 15016-1: Gray and black, contoured and textured G10; 15016-2: Contoured stabilized wood

SHEATH 15016-1: Molded Kydex® with ambidextrous, horizontal carry, leather belt loop; 15016-2: Pressure-fit, rich leather with ambidextrous, horizontal carry, belt loop



15016-2

15016-1



15016-2
(988829F)



15016-1
(988848F)

Sheath included. Additional sheaths available for purchase, \$30

15016

BLADE LENGTH	2.67" (6.78cm)
BLADE THICKNESS	0.140" (3.556mm)
OVERALL LENGTH	6.32" (16.05cm)
WEIGHT	3.53oz (100.07g) G10 3.19oz (90.43g) Wood
HANDLE THICKNESS	0.58" (14.732mm)
SHEATH WEIGHT	1.38oz (39.12g) Kydex® 1.06oz (30.05g) Leather

CONFIGURATIONS/MSRP

15016-1	G10	\$150
15016-2	Wood	\$150

STEEP COUNTRY FAMILY

BENCHMADE DESIGN • U.S.A.



15008/15009



Designed to hit a hunter's preferences for shape and feel dead-center.

MECHANISM Fixed blade

BLADE STYLE 15008: Drop-point;

15009: Drop-point with hook

BLADE STEEL CPM-S30V premium stainless steel (58-60HRC)

HANDLE 15008-ORG and 15009-ORG: Orange textured high-vis Santoprene®; 15008-BLK: Black textured Santoprene®

SHEATH Molded Kydex® with multiple carry positions



	15008	15009
BLADE LENGTH	3.50" (8.89cm)	3.50" (8.89cm)
BLADE THICKNESS	0.140" (3.556mm)	0.140" (3.556mm)
HOOK OPENING	-	0.375" (9.525mm)
OVERALL LENGTH	7.65" (19.43cm)	7.65" (19.43cm)
WEIGHT	3.71oz (105.18g)	3.85oz (109.15g)
HANDLE THICKNESS	0.62" (15.748mm)	0.62" (15.748mm)
SHEATH WEIGHT	1.88oz (53.30g)	1.88oz (53.30g)

CONFIGURATIONS/MSRP

15008-BLK	BLACK	\$125
15008-ORG	ORANGE	\$125
15009-ORG	ORANGE	\$135

CROOKED RIVER FAMILY

BENCHMADE DESIGN • U.S.A.



15080/15085



A traditional profile with modern technology and style that pushes the preconceived notions of what a hunting knife should be.

MECHANISM AXIS® lock

BLADE STYLE Clip-point

BLADE STEEL CPM-S30V premium stainless steel (58-60HRC)

HANDLE 15080-2 and 15085-2: Contoured stabilized wood with anodized aluminum bolsters and stainless steel liners

POCKET CLIP Reversible tip-up black oxide split-arrow

EXTRA Orange G10 backspacer, orange anodized aluminum pivot ring



15080-2

15085-2 Mini

	15080-2	15085-2
BLADE LENGTH	4.00" (10.16cm)	3.40" (8.64cm)
BLADE THICKNESS	0.124" (3.150mm)	0.114" (2.896mm)
OPEN	9.30" (23.62cm)	7.89" (20.04cm)
CLOSED	5.33" (13.54cm)	4.50" (11.43cm)
WEIGHT	5.41"oz (153.37g)	3.29oz (93.27g)
HANDLE THICKNESS	0.60" (15.240mm)	0.52" (13.208mm)

CONFIGURATIONS/MSRP

15080-2	\$260
15085-2	\$240

15031 NORTH FORK

BENCHMADE DESIGN • U.S.A.



A compact folding **AXIS®** hunting knife with a recurved blade to assist with processing duties.

MECHANISM AXIS® lock

BLADE STYLE Drop-point

BLADE STEEL CPM-S30V premium stainless steel (58-60HRC)

HANDLE 15031-1: Gray and black textured G10; 15031-2: Contoured stabilized wood

POCKET CLIP Reversible tip-up black oxide split-arrow



15031-1

15031-2

15031

BLADE LENGTH	2.97" (7.54cm)
BLADE THICKNESS	0.114" (2.989mm)
OPEN	6.87" (17.45cm)
CLOSED	3.90" (9.91cm)
WEIGHT	3.41oz (96.67g) G10 3.16oz (89.58g) Wood
HANDLE THICKNESS	0.53" (13.462mm)

CONFIGURATIONS/MSRP

15031-1	G10	\$185
15031-2	Wood	\$185

15060-2 GRIZZLY CREEK

BENCHMADE DESIGN • U.S.A.



The total package for a hunting folder: the **AXIS®** lock, the perfect blade size and shape, and a folding gut hook that's there when you need it.

MECHANISM AXIS® lock with folding gut hook

BLADE STYLE Drop-point

BLADE STEEL CPM-S30V premium stainless steel (58-60HRC)

HANDLE Stabilized wood

POCKET CLIP Tip-up black oxide split-arrow



15060-2

15060-2

BLADE LENGTH	3.50" (8.89cm)
BLADE THICKNESS	0.124" (3.145mm)
HOOK OPENING	0.50" (12.700mm)
OPEN	7.84" (19.91cm)
CLOSED	4.34" (11.02cm)
WEIGHT	4.76oz (134.94g)
HANDLE THICKNESS	0.56" (14.224mm)

CONFIGURATION/MSRP

15060-2	\$225
---------	-------

15061 GRIZZLY RIDGE®

BENCHMADE DESIGN • U.S.A.



The sure grip and comfort of a dual-durometer handle and a blade designed for all-around hunting utility.

MECHANISM AXIS® lock

BLADE STYLE Drop-point

BLADE STEEL CPM-S30V premium stainless steel (58-60HRC)

HANDLE Orange Grivory® and warm gray overmolded Versaflex®

POCKET CLIP Reversible tip-up black oxide split-arrow

EXTRA Orange anodized aluminum thumb stud and barrel spacers



15061

15061

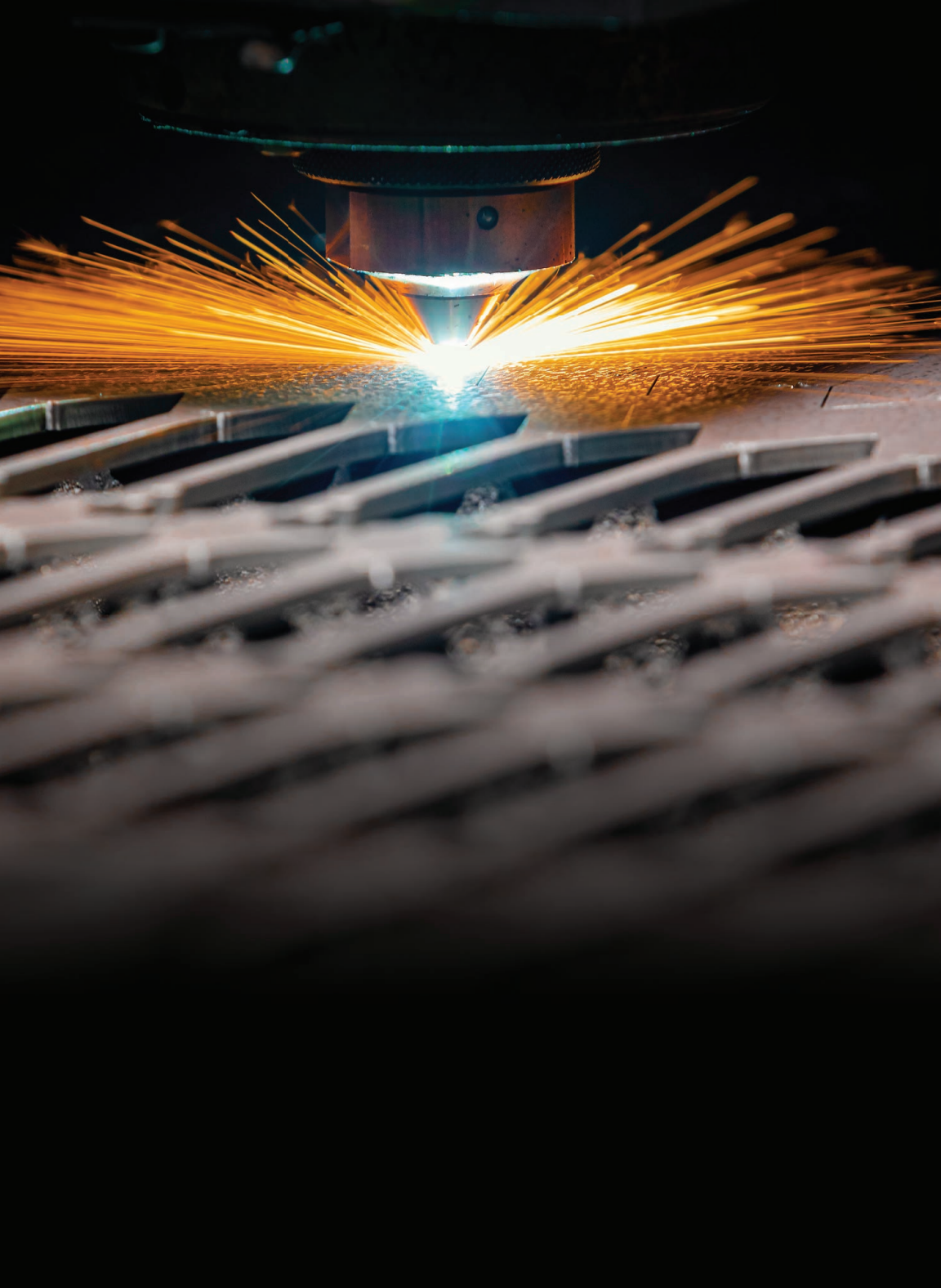
BLADE LENGTH	3.50" (8.89cm)
BLADE THICKNESS	0.124" (3.154mm)
OPEN	7.84" (19.91cm)
CLOSED	4.34" (11.02cm)
WEIGHT	3.77oz (106.99g)
HANDLE THICKNESS	0.58" (14.732mm)

CONFIGURATION/MSRP

15061	\$160
-------	-------

BLACK

CLASS





3400 / 3400BK-1 / 3400BK-2



Absolute control, defined by speed and style.

MECHANISM Double-action out-the-front automatic. Spine fire release button

BLADE STYLE Double-edge dagger with fuller

BLADE STEEL CPM-S30V premium stainless steel (58-60HRC)

HANDLE 3400 and 3400BK: Smooth milled and contoured black G10; 3400BK-1: Olive Drab, Peel ply G10 scales with black anodized 6061-T6 aluminum frame; 3400BK-2, Coyote Brown, Peel ply G10 scales with black anodized 6061-T6 aluminum frame

POCKET CLIP Reversible deep carry w/ DLC coating

EXTRA 3400: Blue sapphire titanium oxide PVD coated stainless steel hardware; blue anodized aluminum release button.



3400

BLADE LENGTH	3.71" (9.42cm)
BLADE THICKNESS	0.105" (2.667mm)
OPEN	8.75" (22.23cm)
CLOSED	5.04" (12.8cm)
WEIGHT	3.93oz (111.41g)
HANDLE THICKNESS	0.6" (15.24mm)

CONFIGURATIONS/MSRP

3400	BLACK	\$480
3400BK	BLACK	\$500
3400BK-1	BLACK	\$470
3400BK-2	BLACK	\$470

INFIDEL® FAMILY

MCHENRY DESIGN • U.S.A.



BLACK CLASS

3300/3350



An incredibly fast, reliable tactical out-the-front, the Infidel® has a cool factor that's hard to describe without experiencing it.

MECHANISM Double-action out-the-front automatic

BLADE STYLE Double-edge dagger with fuller

BLADE STEEL D2 tool steel (60-62HRC)

HANDLE Black anodized, 6061-T6 billet aluminum

POCKET CLIP Gray tip-down deep-carry

SHEATH Cordura® with snap retention and MALICE CLIP®



3300

3350

Sheath with MALICE CLIP® included

	3300	3350
BLADE LENGTH	3.91" (9.93cm)	3.10" (7.87cm)
BLADE THICKNESS	0.118" (2.997mm)	0.104" (2.642mm)
OPEN	8.91" (22.63cm)	7.10" (18.03cm)
CLOSED	5.00" (12.70cm)	4.00" (10.16cm)
WEIGHT	4.90oz (138.91g)	3.40oz (96.39g)
HANDLE THICKNESS	0.59" (14.986mm)	0.54" (13.716mm)

CONFIGURATIONS/MSRP

3300		\$495
3300BK	BLACK	\$510
3350		\$425
3350BK	BLACK	\$440

PHAETON® FAMILY

BENCHMADE DESIGN • U.S.A.



4600/4600-1



This spine-fire OTF combines speed and style in a semi-tactical every day carry.

MECHANISM Double-action out-the-front automatic

BLADE STYLE Drop-point

BLADE STEEL CPM-S30V premium stainless steel (58-60HRC)

HANDLE 4600: Black anodized, 6061-T6 billet aluminum; 4600-1: Bronze anodized 6061-T6 billet aluminum

POCKET CLIP Reversible black oxide deep-carry



4600

4600DLC-1

4600/4600-1

BLADE LENGTH	3.45" (8.76cm)
BLADE THICKNESS	0.112" (2.845mm)
OPEN	8.08" (20.52cm)
CLOSED	4.63" (11.76cm)
WEIGHT	3.01oz (85.33g)
HANDLE THICKNESS	0.47" (11.938mm)

CONFIGURATIONS/MSRP

4600		\$380	
4600DLC	BLACK	\$400	
4600-1	BRONZE	\$380	
4600DLC-1	BLACK	BRONZE	\$400

8551 MEDIATOR™ NEW

BENCHMADE DESIGN • U.S.A.



When the situation arises, streamlined utility is only a push away.

MECHANISM Push-button automatic with integrated safety

BLADE STYLE Reverse tanto

BLADE STEEL CPM-S90V super premium stainless steel (59-61HRC)

HANDLE Black G10

POCKET CLIP Reversible, tip-up mini deep carry

EXTRA Milled texture; Barrel spacers



8551BK

8551

BLADE LENGTH	3.30" (8.38cm)
BLADE THICKNESS	0.115" (2.291mm)
OPEN	7.75" (19.69cm)
CLOSED	4.45" (11.3cm)
WEIGHT	2.89oz (81.93g)
HANDLE THICKNESS	0.52" (13.21mm)

CONFIGURATIONS/MSRP

8551BK	\$295
8551SBK	\$295



4300/4300-1



A classy, all-purpose G10 auto for any occasion, formal to tactical.

MECHANISM Push-button automatic with integrated safety

BLADE STYLE Drop-point

BLADE STEEL 154CM stainless steel (58-61HRC)

HANDLE 4300: Black contoured G10; 4300-1: Green and black contoured and textured G10

POCKET CLIP Reversible tip-up black oxide deep-carry



4300SBK

4300-1

	4300	4300-1
BLADE LENGTH	3.40" (8.64cm)	3.40" (8.64cm)
BLADE THICKNESS	0.114" (2.896mm)	0.114" (2.896mm)
OPEN	7.85" (19.94cm)	7.85" (19.94cm)
CLOSED	4.45" (11.30cm)	4.45" (11.30cm)
WEIGHT	3.47oz (98.37g)	3.60oz (102.06g)
HANDLE THICKNESS	0.49" (12.446mm)	0.49" (12.446mm)

CONFIGURATIONS/MSRP		
4300		\$250
4300BK	BLACK	\$265
4300SBK	SERR BLACK	\$265
4300-1		\$250
4300SBK-1	SERR BLACK	\$265

4400/4400-1



Quick auto-action in a high-traction, lightweight, composite handle.

MECHANISM Push-button automatic with integrated safety

BLADE STYLE Drop-point

BLADE STEEL CPM-S30V premium stainless steel (58-60HRC)

HANDLE 4400: Black textured Grivory® with stainless steel liners; 4400-1: Blue textured Grivory® with stainless steel liners

POCKET CLIP Reversible tip-up black oxide deep-carry



4400-1

4400SBK

4400/4400-1

BLADE LENGTH	3.40" (8.64cm)
BLADE THICKNESS	0.114" (2.896mm)
OPEN	7.80" (19.81cm)
CLOSED	4.40" (11.18cm)
WEIGHT	3.43oz (97.24g)
HANDLE THICKNESS	0.59" (14.986mm)

CONFIGURATIONS/MSRP

4400				\$190
4400BK	BLACK			\$205
4400SBK	SERR	BLACK		\$205
4400-1				\$190
4400SBK-1	SERR	BLACK		\$205

2551 MINI REFLEX II

BENCHMADE DESIGN • U.S.A.



The Reflex gets an upgrade with an enlarged button and increased reliability.

MECHANISM Push-button automatic with integrated safety

BLADE STYLE Drop-point

BLADE STEEL 154CM stainless steel (58-61HRC)

HANDLE Black anodized, 6061-T6 billet aluminum

POCKET CLIP Tip-up standard black oxide



2551

2551

BLADE LENGTH	3.17" (8.05cm)
BLADE THICKNESS	0.097" (2.464mm)
OPEN	7.34" (18.64cm)
CLOSED	4.17" (10.59cm)
WEIGHT	2.58oz (73.14g)
HANDLE THICKNESS	0.48" (12.192mm)

CONFIGURATIONS/MSRP

2551	\$220
2551BK	BLACK \$235

3551 STIMULUS

PARDUE DESIGN • U.S.A.



The 3550 gets an upgrade with an enlarged button and increased reliability.

MECHANISM Push-button automatic with integrated safety

BLADE STYLE Spear-point

BLADE STEEL 154CM stainless steel (58-61HRC)

HANDLE Black anodized, 6061-T6 billet aluminum

POCKET CLIP Tip-up or tip-down standard black oxide



3551

3551

BLADE LENGTH	2.99" (7.59cm)
BLADE THICKNESS	0.088" (2.235mm)
OPEN	7.09" (18.00cm)
CLOSED	4.10" (10.41cm)
WEIGHT	2.71oz (76.83g)
HANDLE THICKNESS	0.46" (11.684mm)

CONFIGURATIONS/MSRP

3551	\$220
3551BK	BLACK \$235

9750 COALITION®

BENCHMADE DESIGN • U.S.A.



An alliance between aircraft-grade alloy and tractable G10 make for a reliable, positive grip.

MECHANISM Push-button automatic with integrated safety

BLADE STYLE Drop-point

BLADE STEEL CPM-S30V premium stainless steel (58-60HRC)

HANDLE Dark gray anodized, 6061-T6 billet aluminum with black G10 inlay

POCKET CLIP Reversible tip-up black oxide deep-carry



9750

9750

BLADE LENGTH	2.87" (7.29cm)
BLADE THICKNESS	0.100" (2.540mm)
OPEN	6.78" (17.22cm)
CLOSED	3.91" (9.93cm)
WEIGHT	2.63oz (74.56g)
HANDLE THICKNESS	0.53" (13.460mm)

CONFIGURATIONS/MSRP

9750	\$240
9750BK	BLACK \$255

3150 IMPEL®

LERCH DESIGN • U.S.A.



This small automatic gent knife is packed with premium features.

MECHANISM Push-button automatic with integrated safety

BLADE STYLE Drop-point

BLADE STEEL CPM-S30V premium stainless steel (58-60HRC)

HANDLE 6061-T6 billet aluminum with textured black G10 inlays

POCKET CLIP Tip-down silver



3150

3150

BLADE LENGTH	1.98" (5.03cm)
BLADE THICKNESS	0.100" (2.540mm)
OPEN	5.04" (12.80cm)
CLOSED	3.06" (7.77cm)
WEIGHT	1.39oz (39.41g)
HANDLE THICKNESS	0.35" (8.890mm)

CONFIGURATIONS/MSRP

3150	\$195
3150BK	BLACK \$210

AUTO STRYKER® FAMILY

BENCHMADE DESIGN • U.S.A.



9101



9501



The next-generation Auto Strykers® are upgraded for increased function and reliability.

MECHANISM Push-button automatic with integrated safety

BLADE STYLE Tanto

BLADE STEEL 154CM stainless steel (58-61HRC)

HANDLE Black anodized, 6061-T6 billet aluminum

POCKET CLIP 9101: Multi-position tip-up or tip-down standard black oxide; 9501: Tip-up standard black oxide



9101BK

9501SBK
Mini

	9101	9501
BLADE LENGTH	3.60" (9.14 cm)	2.95" (7.49cm)
BLADE THICKNESS	0.124" (3.150mm)	0.098" (2.489mm)
OPEN	8.30" (21.08cm)	7.21" (18.31cm)
CLOSED	4.70" (11.94cm)	4.26" (10.82cm)
WEIGHT	4.20oz (119.07g)	2.91oz (82.50g)
HANDLE THICKNESS	0.50" (12.700mm)	0.47" (11.938mm)

CONFIGURATIONS/MSRP

9101BK	BLACK	\$275
9101SBK	SERR BLACK	\$275
9501BK	BLACK	\$235
9501SBK	SERR BLACK	\$235

9051/9052



The AFO-II push-button auto has become a proven tool used in all branches of the Armed Forces.

MECHANISM Push-button automatic with integrated safety

BLADE STYLE 9051: Drop-point; 9052: Tanto

BLADE STEEL 154CM stainless steel (58-61HRC)

HANDLE Black anodized, 6061-T6 billet aluminum

POCKET CLIP Multi-position reversible, tip-up or tip-down standard black oxide

SHEATH Cordura® with snap retention and MALICE CLIP®



9051

9052SBK

Sheath included

	9051	9052
BLADE LENGTH	3.56" (9.04cm)	3.56" (9.04cm)
BLADE THICKNESS	0.124" (3.150mm)	0.124" (3.150mm)
OPEN	8.51" (21.62cm)	8.51" (21.62cm)
CLOSED	4.95" (12.57cm)	4.95" (12.57cm)
WEIGHT	5.83oz (165.28g)	5.71oz (161.88g)
HANDLE THICKNESS	0.60" (15.240mm)	0.60" (15.240mm)

CONFIGURATIONS/MSRP		
9051		\$260
9051BK	BLACK	\$275
9051SBK	SERR BLACK	\$275
9052SBK	SERR BLACK	\$275

9600 RUKUS II

BENCHMADE DESIGN • U.S.A.



The same comfortable ergonomics, back again and rowdy as ever.

MECHANISM Push-button automatic with integrated safety

BLADE STYLE Drop-point

BLADE STEEL CPM-S30V premium stainless steel (58-60HRC)

HANDLE Black anodized, 6061-T6 billet aluminum

POCKET CLIP Reversible tip-up black oxide split-arrow



9600SBK

9600

BLADE LENGTH	3.40" (8.64cm)
BLADE THICKNESS	0.124" (3.150mm)
OPEN	8.50" (21.59cm)
CLOSED	5.10" (12.95cm)
WEIGHT	4.94oz (140.05g)
HANDLE THICKNESS	0.62" (15.748mm)

CONFIGURATIONS/MSRP

9600BK	BLACK	\$265
9600SBK	SERR BLACK	\$265

2750 AUTO ADAMAS®

SIBERT DESIGN • U.S.A.



MOLLE®
COMPATIBLE



The strongest AXIS® knife ever made.

MECHANISM Auto AXIS® lock with integrated safety

BLADE STYLE Drop-point

BLADE STEEL D2 tool steel (60-62HRC)

HANDLE Sand or black G10 with stainless steel liners

POCKET CLIP Reversible tip-up black oxide deep-carry

SHEATH Cordura® with snap retention and MALICE CLIP®



2750BKSN



Sheath with MALICE CLIP® included

2750

BLADE LENGTH	3.82" (9.70cm)
BLADE THICKNESS	0.160" (4.064mm)
OVERALL LENGTH	8.70" (22.10cm)
CLOSED	4.88" (12.40cm)
WEIGHT	7.54oz (213.76g)
HANDLE THICKNESS	0.73" (18.542mm)
SHEATH WEIGHT	1.50oz (42.52g)

CONFIGURATIONS/MSRP

2750BK	BLACK	\$295
2750BKSN	BLACK	\$295

AUTO TRIAGE® FAMILY

BENCHMADE DESIGN • U.S.A.



9160/9170



A triple utility tool that includes a knife, safety hook and glass breaker.

MECHANISM Auto AXIS® lock with integrated safety

BLADE STYLE 9170: Drop-point; 9160: Opposing bevel

BLADE STEEL N680 ultra stainless steel (57-59HRC)

HANDLE Black anodized, 6061-T6 billet aluminum with textured G10 inlays

POCKET CLIP Tip-up black oxide deep-carry

EXTRA 440C automatic-opening rescue hook (58-60HRC), carbide glass breaker



9170BK

9160SBK



Carbide glass breaker

	9170	9160
BLADE LENGTH	3.58" (9.09cm)	3.35" (8.51cm)
HOOK OPENING	0.50" (12.700mm)	0.50" (12.700mm)
BLADE THICKNESS	0.124" (3.150mm)	0.124" (3.150mm)
OPEN	8.31" (21.11cm)	8.08" (20.52cm)
CLOSED	4.73" (12.01cm)	4.73" (12.01cm)
WEIGHT	5.75oz (163.01g)	5.58oz (158.19g)
HANDLE THICKNESS	0.58" (14.732mm)	0.58" (14.732mm)

CONFIGURATIONS/MSRP

9170BK	BLACK	\$310
9170SBK	SERR BLACK	\$310
9160SBK	SERR BLACK	\$305

8600 AUTO BEDLAM®

BENCHMADE DESIGN • U.S.A.



Looks like a scimitar because it was originally designed for the security forces of a king.

MECHANISM Auto AXIS® lock with integrated safety

BLADE STYLE Scimitar

BLADE STEEL 154CM stainless steel (58-61HRC)

HANDLE Black contoured and textured G10 with stainless steel liners

POCKET CLIP Reversible tip-up black oxide deep-carry



8600SBK

8600

BLADE LENGTH	4.00" (10.16cm)
BLADE THICKNESS	0.121" (3.073mm)
OPEN	9.76" (24.79cm)
CLOSED	5.76" (14.63cm)
WEIGHT	7.30oz (206.95g)
HANDLE THICKNESS	0.60" (15.240mm)

CONFIGURATIONS/MSRP

8600BK	BLACK	\$295
8600SBK	SERR BLACK	\$295

AUTO PRESIDIO® II FAMILY

BENCHMADE DESIGN • U.S.A.



MOLLE
COMPATIBLE



5700/5750



A combat legend receives significant ergonomic and performance upgrades. Faster. Better. Stronger.

MECHANISM Auto AXIS® lock with integrated safety

BLADE STYLE Drop-point

BLADE STEEL CPM-S30V premium stainless steel (58-60HRC)

HANDLE Black anodized, 6061-T6 billet aluminum

POCKET CLIP Reversible tip-up black oxide deep-carry

SHEATH 5700: Cordura® with snap retention and MALICE CLIP®



5700

5750SBK

	5700	5750
BLADE LENGTH	3.72" (9.45cm)	3.20" (8.13cm)
BLADE THICKNESS	0.124" (3.150mm)	0.114" (2.896mm)
OPEN	8.72" (22.15cm)	7.48" (19.00cm)
CLOSED	5.00" (12.70cm)	4.34" (11.02cm)
WEIGHT	6.32oz (179.17g)	4.13oz (117.08g)
HANDLE THICKNESS	0.63" (16.007mm)	0.56" (14.224mm)
SHEATH WEIGHT	1.20oz (34.02g)	

CONFIGURATIONS/MSRP

5700			\$275
5700SBK	SERR	BLACK	\$290
5750			\$245
5750BK		BLACK	\$260
5750SBK	SERR	BLACK	\$260

PRESIDIO® II FAMILY **NEW**

BENCHMADE DESIGN • U.S.A.



570-1



The continuation of a workhorse legacy,
15 plus years in the making.

MECHANISM AXIS® lock

BLADE STYLE Drop-point

BLADE STEEL CPM-S30V premium
stainless steel (58-60HRC)

HANDLE Black molded CF-Elite™

POCKET CLIP Reversible tip-up
black oxide deep-carry



570-1

570-1

BLADE LENGTH	3.72" (9.45cm)
BLADE THICKNESS	0.124" (3.15mm)
OPEN	8.72" (22.15cm)
CLOSED	5.00" (12.70cm)
WEIGHT	4.97oz (140.9g)
HANDLE THICKNESS	0.63" (16.0mm)

CONFIGURATIONS/MSRP

570-1	\$155
570SBK-1	BLACK \$170

MINI PRESIDIO® II FAMILY **NEW**

BENCHMADE DESIGN • U.S.A.



575-1



The same level of dependability with an entirely new material.

MECHANISM AXIS® lock

BLADE STYLE Drop-point

BLADE STEEL CPM-S30V premium stainless steel (58-60HRC)

HANDLE Black molded CF-Elite™

POCKET CLIP Reversible tip-up black oxide deep-carry



575-1

575-1

BLADE LENGTH	3.20" (8.13cm)
BLADE THICKNESS	0.114" (2.896mm)
OPEN	7.48" (19.0cm)
CLOSED	4.34" (11.02cm)
WEIGHT	3.19oz (90.43g)
HANDLE THICKNESS	0.56" (14.22mm)

CONFIGURATIONS/ MSRP

575-1	\$145
575BK-1 BLACK	\$160

407 VALLATION®

BENCHMADE DESIGN • U.S.A.



Your new EDC, on and off the job.

MECHANISM AXIS® Assist with integrated safety

BLADE STYLE Drop-point with mohawk spine

BLADE STEEL CPM-S30V premium stainless steel (58-60HRC)

HANDLE Black anodized, 6061-T6 billet aluminum

POCKET CLIP Reversible tip-up black oxide deep-carry

EXTRA Carbide glass breaker



407



Carbide glass breaker

407	
BLADE LENGTH	3.70" (9.40cm)
BLADE THICKNESS	0.124" (3.150mm)
OPEN	8.76" (22.25cm)
CLOSED	5.09" (12.93cm)
WEIGHT	6.38oz (180.87g)
HANDLE THICKNESS	0.70" (17.700mm)

CONFIGURATIONS/MSRP

407	\$265
407SBK	BLACK \$280

427 MINI VALLATION FAMILY®

BENCHMADE DESIGN • U.S.A



427



A duty knife that can be carried every day, the 427 Mini Vallation takes its styling cues from our legacy line of automatic designs.

MECHANISM AXIS® Assist with integrated safety

BLADE STYLE Drop-point with mohawk spine

BLADE STEEL CPM-S30V premium stainless steel (58-60HRC)

HANDLE Black milled, 6061-T6 billet aluminum

POCKET CLIP Reversible tip-up black oxide deep-carry

EXTRA Carbide glass breaker



427



Carbide glass breaker

427

BLADE LENGTH	3.20" (8.13cm)
BLADE THICKNESS	0.114" (2.896mm)
OPEN	7.67" (19.48cm)
CLOSED	4.47" (11.35cm)
WEIGHT	4.58 (129.84g)
HANDLE THICKNESS	0.63" (16mm)

CONFIGURATIONS/MSRP

427	\$245
427SBK	\$260

BAILOUT® FAMILY

BENCHMADE DESIGN • U.S.A



537GY



The slim and ultralight design of the Bailout offers users an optimal strength-to-weight ratio

MECHANISM AXIS® lock

BLADE STYLE Tanto

BLADE STEEL CPM-3V super tough tool steel (60-62HRC)

HANDLE Black Grivory®

POCKET CLIP Reversible tip-up, mini-deep carry



537GY

537GY-1 NEW



Redefining the landscape of lightweight strength.

MECHANISM AXIS® lock

BLADE STYLE Tanto

BLADE STEEL CPM-M4 super steel (62-64HRC)

HANDLE Woodland green anodized 6061-T6 aluminum

POCKET CLIP Reversible mini deep-carry

EXTRA Carbide glass breaker



537GY-1

	537GY/537SGY	537GY-1/537SGY-1
BLADE LENGTH	3.36" (8.53cm)	3.38" (8.59cm)
BLADE THICKNESS	0.09" (2.286mm)	0.09" (2.286mm)
OPEN	8.06" (20.47cm)	8.07" (20.5cm)
CLOSED	4.725" (12cm)	4.71" (11.96cm)
WEIGHT	2.05oz (58.12g)	2.70oz (76.54g)
HANDLE THICKNESS	0.41" (10.41mm)	0.41" (10.41mm)

CONFIGURATIONS/MSRP

537GY	\$175
537SGY	\$175
537GY-1	\$250
537SGY-1	\$250

417 **FACT**[®]

BENCHMADE DESIGN • U.S.A.



**Slim and purpose-built for duty;
ask anyone...**

MECHANISM AXIS[®] lock

BLADE STYLE Spear-point

BLADE STEEL CPM-S30V premium stainless steel (58-60HRC)

HANDLE Skeletonized black anodized, 6061-T6 billet aluminum

POCKET CLIP Reversible tip-up DLC coated deep-carry



417

	417
BLADE LENGTH	3.95" (10.03cm)
BLADE THICKNESS	0.110" (2.794mm)
OPEN	8.72" (22.15cm)
CLOSED	4.77" (12.12cm)
WEIGHT	3.24oz (91.85g)
HANDLE THICKNESS	0.48" (12.192mm)

CONFIGURATIONS/MSRP

417	\$215
417BK	BLACK \$230

818 MINI LOCO

BENCHMADE DESIGN • U.S.A.



A truly robust tactical knife with refined, custom-styled hardware.

MECHANISM AXIS® lock

BLADE STYLE Reverse tanto

BLADE STEEL CPM-S30V premium stainless steel (58-60HRC)

HANDLE Black contoured G10 with stainless steel liners

POCKET CLIP Reversible tip-up black oxide deep-carry

EXTRA Custom-styled hardware



818

818

BLADE LENGTH	3.36" (8.53cm)
BLADE THICKNESS	0.144" (3.658mm)
OPEN	7.62" (19.34cm)
CLOSED	4.38" (11.13cm)
WEIGHT	4.47oz (126.72g)
HANDLE THICKNESS	0.59" (14.986mm)

CONFIGURATIONS/MSRP

818	\$230
818BK	BLACK \$245

275 MANUAL ADAMAS®

SIBERT DESIGN • U.S.A.



The strongest AXIS® knife ever made.

MECHANISM AXIS® lock

BLADE STYLE Drop-point

BLADE STEEL D2 tool steel (60-62HRC)

HANDLE Sand or black G10 with stainless steel liners

POCKET CLIP Reversible tip-up black oxide deep-carry

SHEATH Cordura® with snap retention and MALICE CLIP®



275BK

275SBKSN

Sheath with MALICE CLIP® included

275

BLADE LENGTH	3.82" (9.70cm)
BLADE THICKNESS	0.160" (4.064mm)
OVERALL LENGTH	8.70" (22.10cm)
CLOSED	4.88" (12.40cm)
WEIGHT	7.68oz (217.72g)
HANDLE THICKNESS	0.73" (18.542mm)
SHEATH WEIGHT	1.50oz (42.52g)

CONFIGURATIONS/MSRP

275BK	BLACK	\$235
275SBK	SERR BLACK	\$235
275BKSN	BLACK	\$235
275SBKSN	SERR BLACK	\$235

810 CONTEGO

OSBORNE DESIGN • U.S.A.



A large, aggressively styled tactical knife with a glass breaker on the pommel.

MECHANISM AXIS® lock

BLADE STYLE Reverse tanto

BLADE STEEL CPM-M4 super steel (62-64HRC)

HANDLE Black textured G10 with stainless steel liners

POCKET CLIP Reversible tip-up black oxide deep-carry

EXTRA Carbide glass breaker



810SBK



Carbide glass breaker

810

BLADE LENGTH	3.98" (10.11cm)
BLADE THICKNESS	0.156" (3.962mm)
OPEN	9.28" (23.57cm)
CLOSED	5.30" (13.46cm)
WEIGHT	5.92oz (167.83g)
HANDLE THICKNESS	0.55" (13.970mm)

CONFIGURATIONS/MSRP

810	GRAY	\$250
810SBK	SERR BLACK	\$250

950 RIFT®

OSBORNE DESIGN • U.S.A.



A reverse-tanto, large belled blade for strength and utility with textured G10 handle scales for a secure grip.

MECHANISM AXIS® lock

BLADE STYLE Reverse tanto

BLADE STEEL 154CM stainless steel blade (58-61HRC)

HANDLE Gray and black textured G10 with stainless steel liners

POCKET CLIP Reversible tip-up black oxide split-arrow



950

950

BLADE LENGTH	3.67" (9.32cm)
BLADE THICKNESS	0.114" (2.896mm)
OPEN	8.27" (21.01cm)
CLOSED	4.60" (11.68cm)
WEIGHT	4.80oz (136.08g)
HANDLE THICKNESS	0.56" (14.224mm)

CONFIGURATIONS/MSRP

950		\$205
950SBK	SERR BLACK	\$220

980 TURRET®

BENCHMADE DESIGN • U.S.A.



One of the strongest locks in Benchmade history, this knife is made for the long haul.

MECHANISM AXIS® lock

BLADE STYLE Drop-point

BLADE STEEL CPM-S30V premium stainless steel (58-60HRC)

HANDLE Olive drab G10 with stainless steel liners

POCKET CLIP Reversible tip-up black oxide deep-carry

EXTRA Black oxide steel barrel spacers



980SBK

980

BLADE LENGTH	3.70" (9.40cm)
BLADE THICKNESS	0.124" (3.150mm)
OPEN	8.60" (21.84cm)
CLOSED	4.90" (12.45cm)
WEIGHT	5.81oz (164.71g)
HANDLE THICKNESS	0.67" (17.020mm)

CONFIGURATIONS/MSRP

980	\$230
980SBK	SERR BLACK \$245

365 OUTLAST™

BENCHMADE DESIGN • U.S.A.



We've combined the strength and versatility of the AXIS® lock with two blades, giving you the flexibility needed to get the job done.

MECHANISM Option™ lock

BLADE STYLE Drop-point and full serrated opposing bevel

BLADE STEEL Drop-point: CPM-S30V premium stainless steel (58-60HRC); Opposing bevel: CPM-3V super tough tool steel (60-62 HRC)

HANDLE Black textured G10

POCKET CLIP Reversible tip-up black oxide deep-carry

EXTRA 440C rescue hook (58-60HRC), carbide glass breaker, and integrated O2 wrench



365BK



Carbide glass breaker



Integrated O2 wrench

	365 Drop-Point	Opposing Bevel
BLADE LENGTH	3.59" (9.12cm)	3.15" (8.00cm)
BLADE THICKNESS	0.090" (2.286mm)	0.105" (2.667cm)
OPEN	8.41" (21.36cm)	7.96" (20.22cm)
HOOK OPENING	0.50" (12.700mm)	
CLOSED	4.82" (12.24cm)	
WEIGHT	5.96oz (168.96g)	
HANDLE THICKNESS	0.69" (17.53mm)	

CONFIGURATION/MSRP

365BK SERR BLACK \$325

BLACK CLASS

916 TRIAGE®

BENCHMADE DESIGN • U.S.A.



A triple utility tool that includes a knife, safety hook and glass breaker.

MECHANISM AXIS® lock

BLADE STYLE Opposing bevel

BLADE STEEL N680 ultra stainless steel (57-59HRC)

HANDLE Textured G10 (available in black or safety orange) with stainless steel liners

POCKET CLIP Reversible tip-up black oxide deep-carry

EXTRA 440C rescue hook (58-60HRC), and carbide glass breaker



916SBK

916SBK-ORG



Carbide glass breaker

916

BLADE LENGTH	3.40" (8.64cm)
HOOK OPENING	0.50" (12.700mm)
BLADE THICKNESS	0.124" (3.15mm)
OPEN	8.25" (20.96cm)
CLOSED	4.85" (12.32cm)
WEIGHT	5.24oz (148.55g)
HANDLE THICKNESS	0.45" (11.430mm)

CONFIGURATIONS/MSRP

916SBK	SERR	BLACK	\$215
916SBK-ORG	SERR	BLACK	\$215

917 TACTICAL TRIAGE®

BENCHMADE DESIGN • U.S.A.



Designed specifically for rescue and other mission objectives. New to the family is the 917BK-1901.

MECHANISM AXIS® lock

BLADE STYLE Drop-point

BLADE STEEL CPM-S30V premium stainless steel (58-60HRC)

HANDLE 917: Black contoured G10 with stainless steel liners; 917BK-1901: Black G10 with milled waffle tread grip, and Blue/Black layered G10 on the right handle. Stainless steel liners

POCKET CLIP Reversible tip-up black oxide deep-carry

EXTRA 440C rescue hook (58-60HRC), and carbide glass breaker



917SBK



917BK-1901



Carbide glass breaker

917

BLADE LENGTH	3.48" (8.84cm)
HOOK OPENING	0.50" (12.700mm)
BLADE THICKNESS	0.124" (3.15mm)
OPEN	8.33" (21.16cm)
CLOSED	4.85" (12.32cm)
WEIGHT	5.28oz (149.69g)
HANDLE THICKNESS	0.55" (13.970mm)

CONFIGURATIONS/MSRP

917BK	BLACK	\$240
917SBK	SERR BLACK	\$240
917BK-1901		\$250
917SBK-1901		\$250

BLACK CLASS

391 SOCP TACTICAL FOLDER NEW

THOMPSON DESIGN • U.S.A.



391 / 391T



Concealment and protection when it matters most.

MECHANISM AXIS® lock

BLADE STYLE 391:Spear-point; 391T: Trainer

BLADE STEEL 391:D2 tool steel (60-62HRC);
391T: 440C stainless steel (58-60HRC)

HANDLE Black molded CF-Elite™

POCKET CLIP Black oxide deep-carry

EXTRA 391: Secondary 4 position, mini deep-carry clip with quick-draw ring (pictured) 391T: Red blade and spacer for visual identification as a trainer. Carbide glass breaker.



391BK

391T

	391	391T
BLADE LENGTH	4.47" (11.35cm)	4.04" (10.26cm)
BLADE THICKNESS	0.121" (3.073mm)	0.121" (3.073mm)
OPEN	10.13" (25.73cm)	9.70" (24.64cm)
CLOSED	5.66" (14.38cm)	5.66" (14.38cm)
WEIGHT	4.10oz (116.23g)	4.10oz (116.23g)
HANDLE THICKNESS	0.508" (12.9mm)	0.508" (12.9mm)

CONFIGURATION/MSPR

391BK	BLACK	\$190
391SBK	BLACK	\$190
391T	RED	\$175

SOCP® FAMILY
THOMPSON DESIGN • U.S.A.



176/178



Designed for the Special Operations Combatives Program, it's the optimal tool for self-defense.

MECHANISM Fixed blade

BLADE STYLE 176: Double-edged dagger; 178: Spear-point

BLADE STEEL 440C stainless steel (58-60HRC)

HANDLE Black coated single-piece with finger ring

POCKET CLIP DLC coated deep-carry clip with "J" hook

SHEATH MOLLE® compatible, MALICE CLIP® free, injection molded in black or sand with lanyard hole

EXTRA Combo kits with trainer available



176BK

178SBK

CONFIGURATIONS/MSRP

176BK Dagger & black sheath	BLACK	\$115
176BKSN Dagger & sand sheath	BLACK	\$115
176BK-COMBO Dagger & black sheath with trainer	BLACK	\$155
176BKSN-COMBO Dagger & sand sheath with trainer	BLACK	\$155
178SBK Spear-point & black sheath	SERR BLACK	\$125
178SBKSN Spear-point & sand sheath	SERR BLACK	\$125
178SBK-COMBO Spear-point & black sheath with trainer	SERR BLACK	\$155
178SBKSN-COMBO Spear-point & sand sheath with trainer	SERR BLACK	\$155

176 DAGGER

178 SPEAR-POINT

BLADE LENGTH	3.22" (8.18cm)	3.22" (8.18cm)
HANDLE LENGTH	4.03" (10.24cm)	4.03" (10.24cm)
OVERALL LENGTH	7.25" (18.42cm)	7.25" (18.42cm)
THICKNESS	0.175" (4.445mm)	0.175" (4.445mm)
WEIGHT	2.12oz (60.10g)	2.04oz (57.83g)
SHEATH WEIGHT	1.04oz (29.48g)	1.04oz (29.48g)

BLACK CLASS

173 MINI SOCP®

THOMPSON DESIGN • U.S.A.



Taking the best features of its full-sized counterpart, we have optimized the SOCP® platform for concealed carry.

MECHANISM Fixed Blade

BLADE STYLE Double-edge dagger

BLADE STEEL 440C stainless steel (58-60HRC)

HANDLE Black coated, single-piece with finger ring

POCKET CLIP DLC Coated deep carry with "J" hook

SHEATH MOLLE® compatible, MALICE™ clip free, injection molded in black with lanyard hole. Included leather pad attaches to sheath for comfortable IWB carry



173BK

173BK

BLADE LENGTH	2.22" (5.64cm)
BLADE THICKNESS	0.175" (4.445mm)
OVERALL LENGTH	6.25" (15.88cm)
HANDLE LENGTH	4.34" (0cm)
WEIGHT	3.0oz (85.05g)
THICKNESS	0.175" (4.45mm)

CONFIGURATION/MSRP

173BK

\$110



176T



179



Designed for rescue professionals and less-than lethal self-defense.

MECHANISM Fixed blade

BLADE STYLE 176T: Trainer; 179: Rescue hook with carbide glass breaker and oxygen wrench

BLADE STEEL 440C stainless steel (58-60HRC)

HANDLE Coated single-piece tool with finger ring

POCKET CLIP DLC Coated deep carry with "J" hook

SHEATH MOLLE® compatible, MALICE CLIP® free, injection molded in black or sand with lanyard hole

EXTRA Combo kits with trainer available

Includes the Benchmade Rescue hook design, carbide glass breaker, and an O₂ wrench



179GRY

176T

Training is key to the SOCP program. All SOCP knives are available as a combo with a trainer.

CONFIGURATIONS/MSRP

	176 TRAINER	179 HOOK
BLADE LENGTH	2.78" (7.06cm)	0.375" (9.525mm)
HANDLE LENGTH	4.03" (10.24cm)	4.03" (10.24cm)
OVERALL LENGTH	6.81" (17.30cm)	6.75" (17.15cm)
THICKNESS	0.175" (4.446mm)	0.175" (4.446mm)
WEIGHT	2.58oz (73.14g)	188oz (53.30g)
SHEATH WEIGHT	1.04oz (29.48g)	1.04oz (29.48g)

	176T	RED	\$75
Trainer with sheath			
179GRY			
Hook & black sheath	GRAY		\$100
179GRYSN			
Hook & sand sheath	GRAY		\$100
179GRY-COMBO			
Hook & black sheath with trainer	GRAY		\$140
179GRYSN-COMBO			
Hook & sand sheath with trainer	GRAY		\$140

125 AZERIA®
BENCHMADE DESIGN • U.S.A.



When bad days get worse, it's good to have back-up plans.

MECHANISM Fixed blade

BLADE STYLE Wharncliffe with angled profile

BLADE STEEL N680 ultra stainless steel (57-59HRC)

HANDLE Black Grivory®

SHEATH Low-profile, molded with ambidextrous clip designed for duty belts; features anti-assailant retention device



125BK



Sheath reverse

125BK

BLADE LENGTH	2.90" (7.37cm)
BLADE THICKNESS	0.114" (2.896mm)
OVERALL LENGTH	5.64" (14.33cm)
WEIGHT	2.37oz (67.19g)
HANDLE THICKNESS	0.55" (13.970cm)
SHEATH WEIGHT	1.81oz (51.31g)

CONFIGURATION/MSRP

125BK	BLACK	\$100
-------	-------	-------

175 CBK
BENCHMADE DESIGN • U.S.A.



A tool designed for combat-type applications.

MECHANISM Fixed blade

BLADE STYLE Chisel-ground, double-edge dagger

BLADE STEEL 440C stainless steel (58-60HRC)

HANDLE Rubber-dipped

SHEATH Injection-molded multi-position carry



175BKSN

175BK



175BK Sheath (982397F)



175BKSN Sheath (988085F)

Sheath included. Additional sheaths available for purchase, \$25

175

BLADE LENGTH	2.50" (6.35cm)
BLADE THICKNESS	0.125" (3.18mm)
OVERALL LENGTH	5.47" (13.89cm)
WEIGHT	2.32oz (65.77g)
HANDLE THICKNESS	0.25" (6.350mm)
SHEATH WEIGHT	1.70oz (48.19g)

CONFIGURATIONS/MSRP

175BK	BLACK	\$110
175BKSN	BLACK	\$110

101 FOLLOW-UP®

BENCHMADE DESIGN • U.S.A.



However you wear it, this small, convenient fixed blade is at the top of the curriculum for back-up on bad days; hence the numeric designation.

MECHANISM Fixed blade

BLADE STYLE Drop-point

BLADE STEEL CPM-S30V premium stainless steel (58-60HRC)

HANDLE Coated skeletonized handle with optional paracord wrap included

SHEATH Black Boltaron®



101BK



Handle wrap option

101

BLADE LENGTH	2.60" (6.60cm)
HANDLE LENGTH	3.39" (8.61cm)
OVERALL LENGTH	5.99" (15.21cm)
WEIGHT	2.03oz (57.55g)
HANDLE THICKNESS	0.140" (3.656mm)
SHEATH WEIGHT	0.62oz (17.58g)

CONFIGURATION/MSRP

101BK	BLACK	\$120
-------	-------	-------

112 H2O FIXED

BENCHMADE DESIGN • U.S.A.



This dive knife was originally developed for an elite military program.

MECHANISM Fixed blade

BLADE STYLE Opposing bevel with blunt tip and integrated rescue hook

BLADE STEEL N680 ultra stainless steel (57-59HRC)

HANDLE Black textured Santoprene®

SHEATH Molded thermoplastic with thumb release



112SBK-BLK

112

BLADE LENGTH	3.50" (8.90cm)
BLADE THICKNESS	0.124" (3.150mm)
OVERALL LENGTH	8.07" (20.50cm)
WEIGHT	3.20oz (90.72g)
HANDLE THICKNESS	0.59" (14.986mm)
SHEATH WEIGHT	1.04oz (29.48g)

CONFIGURATION/MSRP

112SBK-BLK	SERR	BLACK	\$140
------------	------	-------	-------

133 FIXED INFIDEL®

BENCHMADE DESIGN • U.S.A.



Driven by the iconic tactical design of the Infidel® OTF, the Fixed Infidel® affords the certainty of a fixed blade for the uncertainty of the mission.

MECHANISM Fixed blade

BLADE STYLE Double-edge dagger

BLADE STEEL D2 tool steel (60-62HRC)

HANDLE Black anodized, 6061-T6 billet aluminum

SHEATH Black Boltaron®, Tek-Lok™ compatible



133

133

BLADE LENGTH	4.52" (11.48cm)
BLADE THICKNESS	0.144" (3.658mm)
OVERALL LENGTH	9.21" (23.39cm)
WEIGHT	5.11oz (114.87g)
HANDLE THICKNESS	0.48" (12.192mm)
SHEATH WEIGHT	2.51oz (71.16g)

CONFIGURATIONS/MSRP

133	\$240
133BK	BLACK \$255

375 ADAMAS® FIXED BLADE

SIBERT DESIGN • U.S.A.



MOLLE
COMPATIBLE



Includes a paracord handle wrap, molded jump-rated sheath and Tek-Lok™ attachment system.

MECHANISM Fixed blade

BLADE STYLE Drop-point with serrations on spine

BLADE STEEL D2 tool steel (60-62HRC)

HANDLE Black or sand coated and skeletonized, with optional paracord wrap included

SHEATH Injection-molded with tension screw, removable locking strap and eight-position Tek-Lok™

375SN



Tek-Lok™ included

375BK



(987800F)

(987592F)

Sheath included. Additional sheaths available for purchase, \$45



CORD WRAP

To view video, scan code below or visit: youtu.be/_NBz23ANnis



375

BLADE LENGTH	4.20" (10.67cm)
BLADE THICKNESS	0.170" (4.318mm)
OVERALL LENGTH	9.03" (22.94cm)
WEIGHT	5.60oz (158.76g)
HANDLE THICKNESS	0.17" (4.318mm)
SHEATH WEIGHT	1.11oz (31.47g)

CONFIGURATIONS/MSRP

375SN	SAND	\$205
375BK	BLACK	\$205
375BKSN	BLACK	\$205

119 ARVENSIS

SIBERT DESIGN • U.S.A.



A big, heavy-duty tactical knife that Shane Sibert designed to be well balanced with a "light hand feel."

MECHANISM Fixed blade

BLADE STYLE Clip-point

BLADE STEEL 154CM stainless steel (58-61HRC)

HANDLE Black contoured G10

SHEATH Black Boltaron®

EXTRA Pressed titanium handle tubing



119SBK

119



Sheath included

119

BLADE LENGTH	6.42" (16.31cm)
BLADE THICKNESS	0.193" (4.902mm)
OVERALL LENGTH	11.70" (29.72cm)
WEIGHT	11.74oz (332.82g)
HANDLE THICKNESS	0.75" (19.050mm)
SHEATH WEIGHT	4.25oz (120.49g)

CONFIGURATIONS/MSRP

119				\$265
119SBK	SERR	BLACK		\$280

NIMRAVUS® FAMILY

BENCHMADE DESIGN • U.S.A.



BLACK CLASS

140/141



Our all-time best-selling combat fixed blade.

MECHANISM Fixed blade

BLADE STYLE 140: Drop-point; 141: Tanto

BLADE STEEL 154CM stainless steel (58-61HRC)

HANDLE Black anodized, 6061-T6 billet aluminum

SHEATH Multifunctional, nylon, and MOLLE® compatible with MALICE CLIP®



	140	141
BLADE LENGTH	4.50" (11.43cm)	4.50" (11.43cm)
BLADE THICKNESS	0.115" (2.921mm)	0.115" (2.921mm)
OVERALL LENGTH	9.45" (24.00cm)	9.45" (24.00cm)
WEIGHT	6.20oz (175.77g)	5.86oz (166.13g)
HANDLE THICKNESS	0.58" (14.732mm)	0.58" (14.732mm)
SHEATH WEIGHT	5.00oz (141.75g)	5.00oz (141.75g)

CONFIGURATIONS/MSRP		
140BK	BLACK	\$210
140SBK	SERR BLACK	\$210
141BK	BLACK	\$210
141SBK	SERR BLACK	\$210
141SBKSN	SERR BLACK	\$225

7 BLKW RESCUE HOOK

BENCHMADE DESIGN • U.S.A.



Whether treating serious injury, locating contraband or extracting someone from a vehicle, these compact rescue hooks are an essential tool for the armed professional.

MECHANISM Rescue hook

BLADE STYLE Hook

BLADE STEEL BDZ1 stainless steel (58-60 HRC)

HANDLE Single-piece dip-coated handle

SHEATH Nylon MOLLE® compatible with included MALICE CLIP®



7 BLKW

7 BLKW

HOOK OPENING	0.50" (12.700mm)
OVERALL LENGTH	4.30" (10.92cm)
WEIGHT	1.50oz (42.52g)
SHEATH WEIGHT	0.95oz (26.93g)

CONFIGURATIONS/MSRP

7 BLKW	BLACK	\$50
7 BLSKWSN	BLACK	\$50

10 BLK RESCUE HOOK

BENCHMADE DESIGN • U.S.A.



A versatile rescue instrument designed originally for corrections officers, the enlarged hook gap allows cutting of rope up to 1" thick, and other larger-diameter woven materials. The sheath provides ambidextrous carry in both vertical and horizontal positions.

MECHANISM Rescue hook

BLADE STYLE Hook

BLADE STEEL 440C stainless steel (58-60HRC)

HANDLE Coated skeletonized

SHEATH Boltaron® with MOLLE® compatible clip

EXTRA Hook fits in sheath from both sides and has removable retention strap



10 BLK



Sheath reverse

10 BLK

HOOK OPENING	1.00" (2.54cm)
OVERALL LENGTH	6.05" (15.37cm)
WEIGHT	2.05oz (58.12g)
SHEATH WEIGHT	2.37oz (67.19g)

CONFIGURATION/MSRP

10 BLK	BLACK	\$80
--------	-------	------

RESCUE HOOK FAMILY

BENCHMADE DESIGN • U.S.A.



BLACK CLASS

8 BLKW/8 BLKW MED



Ideal for cutting tasks where speed and safety are primary concerns.

MECHANISM Rescue hook

BLADE STYLE Hook

BLADE STEEL 440C stainless steel (58-60HRC)

HANDLE Coated skeletonized

SHEATH Black nylon with MALICE CLIP®. Alternative sheath colors are available separately (see page 100).



8 BLKW

8 BLKW MED

Sheath included

	8 BLKW	8 BLKW MED
HOOK OPENING	0.50" (12.700mm)	0.50" (12.700mm)
OVERALL LENGTH	6.50" (16.51cm)	6.50" (16.51cm)
WEIGHT	1.43oz (40.54g)	1.86oz (52.73g)
SHEATH WEIGHT	0.88oz (24.95g)	0.88oz (24.95g)

CONFIGURATIONS/MSRP

8 BLKW	BLACK	\$55
8 BLKW MED	BLACK	\$55

BENCHMADE 1100 SERIES PENS

BENCHMADE DESIGN • U.S.A.



Precision-crafted writing tools.

Ergonomic knurling patterns

Anodized aluminum, or Damascus bodies

Caps securely snap open and closed

Fisher Space Pen® ink cartridges

ALUMINUM



1100-2
(Black Ink)



1101-2
(Black Ink & Carbide Tip)



Carbide tip breaks glass

DAMASCUS PATTERN



1100-14
(Black Ink)



Damascus pattern detail

REFILLS

984864F Black Ink Refill

1100

PEN DIAMETER	0.50" (12.70mm)
OPEN WITHOUT CAP	5.10" (12.95cm)
CLOSED WITH CAP	5.33" (13.54cm)
ALUMINUM WEIGHT	1.30oz (36.85g)
TITANIUM WEIGHT	1.89oz (53.58g)
STAINLESS WEIGHT	3.20oz (90.72g)
DAMASCUS WEIGHT	3.20oz (90.72g)

CONFIGURATIONS/MSRP

Aluminum	\$145
Aluminum with Carbide Tip	\$165
Damascus	\$350
Black Ink Refill 984864F	\$7

HATS

NEW



FAVORITE TRUCKER HAT

STYLE Richardson 112 Trucker Hat, MidPro

MATERIAL Cotton-Poly, Nylon Mesh

SIZE One Size Fits All

PRICE \$30.00

ORIGIN Embroidered in USA

AVAILABLE COLORS



BLACK
50060



ROYAL
50061



CHARCOAL
50062



LODEN
50063

NEW



FAVORITE DAD HAT

STYLE Richardson 252 Dad Hat, LowPro

MATERIAL Premium Cotton Twill

SIZE One Size Fits All

PRICE \$30.00

ORIGIN Embroidered in USA

AVAILABLE COLORS



CHARCOAL
50064

NEW



STATE PRIDE DAD HAT

STYLE Richardson 252 Dad Hat, LowPro

MATERIAL Premium Cotton Twill

SIZE One Size Fits All

PRICE \$30.00

ORIGIN Made in USA

AVAILABLE COLORS



LODEN

50065

NEW



FAVORITE 7-PANEL HAT

STYLE Richardson 168 Mesh Trucker Hat HiPro 7 Panel

MATERIAL Cotton-twill, Poly Mesh

SIZE One Size Fits All

PRICE \$30.00

ORIGIN Made in USA

AVAILABLE COLORS



BLACK

50066

NEW



KNIFE CO. 7-PANEL HAT

STYLE Richardson 168 Mesh Trucker Hat HiPro 7 Panel

MATERIAL Cotton-twill, Poly Mesh, Leather Patch

SIZE One Size Fits All

PRICE \$30.00

ORIGIN Logo applied in USA

AVAILABLE COLORS



DARK GREEN

50067

NEW



TACTICAL HAT

STYLE Adjustable Velcro Back

MATERIAL Ripstop with velcro patch

SIZE One Size Fits Most

PRICE \$30.00

AVAILABLE COLORS



RANGER GREEN

50070

MEN'S APPAREL

NEW



FAVORITE T-SHIRT

MATERIAL 100% Combed Ring Spun Organic Cotton (4.4oz)

PRICE \$30.00

ORIGIN Made in USA

AVAILABLE COLORS



NIGHT
50037-SM
50037-MD
50037-LG
50037-XL
50037-2X
50037-3X
S-3XL



OCEAN
50038-SM
50038-MD
50038-LG
50038-XL
50038-2X
50038-3X
S-3XL



SLATE
50039-MD
50039-LG
50039-XL
50039-2X
M-2XL



MOSS
50040-MD
50040-LG
50040-XL
50040-2X
M-2XL



BARK
50041-MD
50041-LG
50041-XL
50041-2X
M-2XL

NEW



OUR BANNER T-SHIRT

MATERIAL 100% Combed Ring Spun Organic Cotton (4.4oz)

PRICE \$30.00

ORIGIN Made in USA

AVAILABLE COLORS



BLACK
50042-SM
50042-MD
50042-LG
50042-XL
50042-2X
50042-3X
S-3XL



BARK
50043-MD
50043-LG
50043-XL
50043-2X
M-2XL

NEW



TOPOGRAPHIC T-SHIRT

MATERIAL 100% Combed Ring Spun Organic Cotton (4.4oz)

PRICE \$30.00

ORIGIN Made in USA

AVAILABLE COLORS



SLATE
50044-SM
50044-MD
50044-LG
50044-XL
50044-2X
50044-3X
S-3XL



MOSS
50045-MD
50045-LG
50045-XL
50045-2X
M-2XL

NEW



BLADES-BARS-STARS T-SHIRT

MATERIAL 100% Combed Ring Spun Organic Cotton (4.4oz)

PRICE \$30.00

ORIGIN Made in USA

AVAILABLE COLORS



SLATE
50046-SM
50046-MD
50046-LG
50046-XL
50046-2X
50046-3X
S-3XL

NEW



SLICED SALMON T-SHIRT

MATERIAL 100% Combed Ring Spun Organic Cotton (4.4oz)

PRICE \$30.00

ORIGIN Made in USA

AVAILABLE COLORS



OCEAN
50047-SM
50047-MD
50047-LG
50047-XL
50047-2X
50047-3X
S-3XL

NEW



FAVORITE HOODIE

STYLE Pullover Hoodie

MATERIAL Cotton Poly Blend (10oz.)

PRICE \$50.00

ORIGIN Printed in USA

AVAILABLE COLORS



BLACK
50048-SM
50048-MD
50048-LG
50048-XL
50048-2X
50048-3X
S-3XL



GUNMETAL
50049-MD
50049-LG
50049-XL
50049-2X
M-2XL

NEW



FAVORITE CREW

STYLE Pullover Crew w/ Embroidered Logo

MATERIAL Cotton Poly Blend (8.5oz.)

PRICE \$55.00

ORIGIN Embroidered in USA

AVAILABLE COLORS



BLACK
50050-SM
50050-MD
50050-LG
50050-XL
50050-2X
50050-3X
S-3XL

NEW



FAVORITE ZIP-UP

STYLE Zip Up Hoodie

MATERIAL Cotton Poly Blend (8.5oz)

PRICE \$50.00

ORIGIN Printed in USA

AVAILABLE COLORS



BLACK
50051-SM
50051-MD
50051-LG
50051-XL
50051-2X
50051-3X
S-3XL

WOMEN'S APPAREL

NEW



FAVORITE T-SHIRT

MATERIAL 100% Combed Ring Spun Organic Cotton (4.4oz)

PRICE \$30.00

ORIGIN Made in USA

AVAILABLE COLORS



PACIFIC BLUE

50052-SM
50052-MD
50052-LG
50052-XL
50052-2X
5-2XL



SLATE

50053-SM
50053-MD
50053-LG
50053-XL
50053-2X
M-2XL

NEW



KNIFE CO. T-SHIRT

MATERIAL 100% Combed Ring Spun Organic Cotton (4.4oz)

PRICE \$30.00

ORIGIN Made in USA

AVAILABLE COLORS



EGGPLANT

50054-SM
50054-MD
50054-LG
50054-XL
5-2XL

NEW



WOMEN'S FAVORITE HOODIE

STYLE Pullover Hoodie

MATERIAL Cotton Poly Blend (8.5oz.)

PRICE \$30.00

ORIGIN Printed in USA

AVAILABLE COLORS



CARBON HEATHER

50055-SM
50055-MD
50055-LG
50055-XL
50055-2X
5-2XL



MIDNIGHT BLUE

50056-SM
50056-MD
50056-LG
50056-XL
50056-2X
5-2XL

NEW



WOMEN'S KNIFE CO. ZIP HOODIE

STYLE Zip Up Hoodie

MATERIAL Cotton Poly Blend (8.5oz.)

PRICE \$50.00

ORIGIN Printed in USA

AVAILABLE COLORS



CARBON HEATHER

50057-SM
50057-MD
50057-LG
50057-XL
50057-2X
5-2XL

YOUTH APPAREL

NEW



YOUTH CUB T-SHIRT

MATERIAL 100% Combed Ring Spun Cotton (4.4oz)

PRICE \$20.00

ORIGIN Made in USA

AVAILABLE COLORS



GRAY
50058-4T
50058-6T
50058-8T
50058-10-12
50058-14-16
4T-14/16

NEW



YOUTH FAVORITE ZIP HOODIE

STYLE Zip-up Hoodie

MATERIAL Cotton Poly Blend (6.5oz.)

PRICE \$40.00

ORIGIN Printed in USA

AVAILABLE COLORS



NICKEL
50059-4T
50059-6T
50059-8T
50059-10-12
50059-14-16
4T-14/16

NEW



YOUTH FAVORITE FLEX HAT

STYLE R-Flex

MATERIAL Cotton-Poly/Nylon Mesh

SIZE One Size

PRICE \$25.00

AVAILABLE COLORS



ROYAL
50068

ACCESSORIES



BENCHMADE FERRO ROD

We've partnered with Exotac, the leader in high-quality fire tools, to create the perfect ferro rod.

STYLE Ferro Rod

MATERIAL Blue anodized 6061-T6 aluminum tinder capsule

STRIKER 5/16" by 3.10" ferrocium rod

EXTRA Included quickLIGHT™ waterproof tinder

ORIGIN Made in the USA by Exotac

SKU 50023

EXOTAC



BENCHMADE KNIFE ROLL

Showcase your collection with our new Knife Roll. Made in the USA and built tough so you can bring your collection with you in the field or just show off to friends.

STYLE Knife Roll

COLOR Gray with black accents

MATERIAL 1680 nylon and urethane coating construction

CAPACITY Holds up to eleven knives and two pens

EXTRA Two integrated loop panels for morale patches

SKU 50019



Pro-Model Bottle Opener

High-speed beverage-entry tool.

STYLE Bottle opener

COLOR Gray Steel

MATERIAL Stainless steel with wordmark cutout

SKU 1000000



Benchmade Pint Glass

For when the time comes to pocket the knife and raise a pint.

STYLE Pint glass

COLOR Clear with blue Benchmade butterfly logo

MATERIAL Glass

SKU 988053F



Benchmade Coffee Mug

Black on black on black.

STYLE Coffee mug

COLOR Matte Black with Gloss Black logo, handle, rim

MATERIAL Ceramic

SKU 989133F

SHARPENERS & MAINTENANCE

GUIDED FIELD SHARPENER



20° controlled-angle sharpener, perfect for knives, fish hooks, broadheads, and more.

SKU 100604F

WORK SHARP
KNIFE & TOOL SHARPENERS

EDGE MAINTENANCE TOOL



Our latest collaboration with Work Sharp, featuring a ceramic rod and leather strop to keep your edge sharp anywhere you have your knife.

SKU 50030

WORK SHARP
KNIFE & TOOL SHARPENERS

BLUELUBE™ LUBRICANT

BLUELUBE™ CLEANSER

Clean, lubricate,
and protect your Benchmade.

SKU 983901F - Bluelube™ Cleaner
983900F - Bluelube™ Lubricant



BLUE BOX TOOL KIT

Blue Box Tool Kit

T6, T8, and T10 Torx bits with a bit holder/extension, all in a molded plastic case that doubles as the handle.

SKU 981084F



SHEATHS AND ATTACHMENT ACCESSORIES

Model-specific sheaths

For optional model-specific sheaths, please visit their respective pages in the catalog.

Bushcrafter.....	Page 39
Saddle Mountain Skinner.....	Page 43
Hidden Canyon Hunter.....	Page 45
CBK.....	Page 84
Adamas Fixed.....	Page 87
Nimravus.....	Page 89

Folder Pouch (MOLLE® Compatible)

These snap-over hood closure pouches secure the knife well and can be used for belt carry with the MALICE CLIP® (included), and are MOLLE® system enabled too. Heavy stitch and elasticized true fit. Made in USA.

MOLLE® Folder Pouch.....	\$25
A. 984818F - Black	



A.

Cordura® Folder Pouch with Snap Retention (MOLLE® Compatible)

Sheaths come standard with MALICE CLIP® and Velcro® adjustable belt hanger for belt carry. Heavy stitch and hard liners stow the knife securely and a snap-around closure secures the handle. Made in USA.

Cordura Pouch with Snap Retention.....	\$30
B. 100778F - Black	



B.

Soft Sheaths

All soft sheaths are 1680-denier poly-ballistic nylon with liners and Velcro® closures. Made in USA.

C. 981086F - Soft Sheath, small (1.625" W x 5" D), black.....	\$10
981087F - Soft Sheath, large (2" W x 5.25" D), black.....	\$10
981717F - Soft Sheath, 4" Bali-Song® Series, black.....	\$10



C.

7-Hook/8-Hook Pouch (MOLLE® Compatible)

These Velcro® hood closure pouches secure the Rescue Hook for belt carry, and are MOLLE® system enabled with the MALICE CLIP® (sold separately). Made in USA.

MOLLE® 7-Hook Pouch.....	\$12
D. 984166F - Black	
E. 984205F - Foliage Green	
F. 984204F - Coyote	

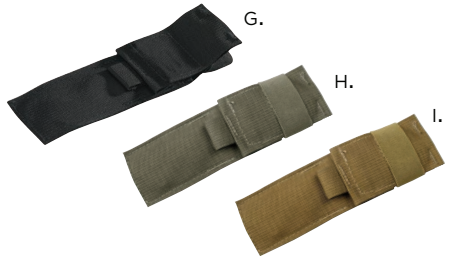


D.

E.

F.

MOLLE® 8-Hook Pouch.....	\$15
G. 985398F - Black	
H. 985570F - Foliage Green	
I. 985569F - Coyote	



G.

H.

I.

Tek-Lok™

Multiple position options, with compatible sheath.

J. 981609F - Tek-Lok®, large size.....	\$15
--	------



J.

MALICE CLIPS®

Injection-molded connecting clip to attach sheaths to MOLLE® systems, or to use as a belt-loop-style carry. Clips securely closed with a snap-lock.

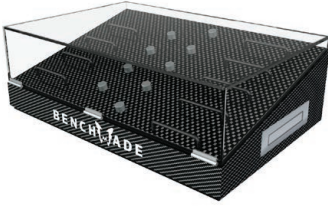
K. 983551F - Large MALICE CLIP® (4.75" size).....	\$3.50
L. 983550F - Small MALICE CLIP® (3" size).....	\$2.00



K.

L.

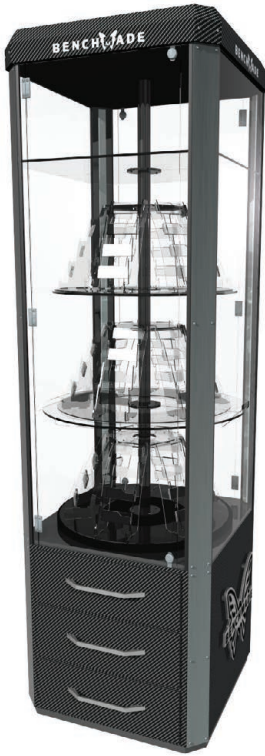
DISPLAYS



Magnetic Knife Display
 Hinged magnetic display; holds up to nine open knives.
 13"W x 9"D x 5"H
 989797F



Single Knife Block
 Transparent acrylic; each one holds a single knife in the open position.
 ½"W x 2 ½"D x ¾"H
 1000005



Large Display Case
 Rotatable shelf, multi-drawer, floor display. Three volcano displays that hold 24 knives each.
 24"W x 24"D x 72"H
 989136F - Tower
 100738F - Volcano Display



Acrylic Freestanding Display
 Four fixed position shelves with a single locking access door.
 15"W x 15"D x 55.75"H
 50027



Single Knife Holder
 Transparent acrylic; each one holds a single knife in the open position, with space for information card.
 6 ½"W x 2"D x 2"H
 100370F



Benchmade Counter Mat
 Transparent flexible counter mat with Benchmade and LifeSharp logos.
 10"x12"
 100724F



Waterfall Knife Rack
 Transparent blue acrylic; holds seven knives in the open position.
 10"D x 3 ¾"W x 3"H
 985567F

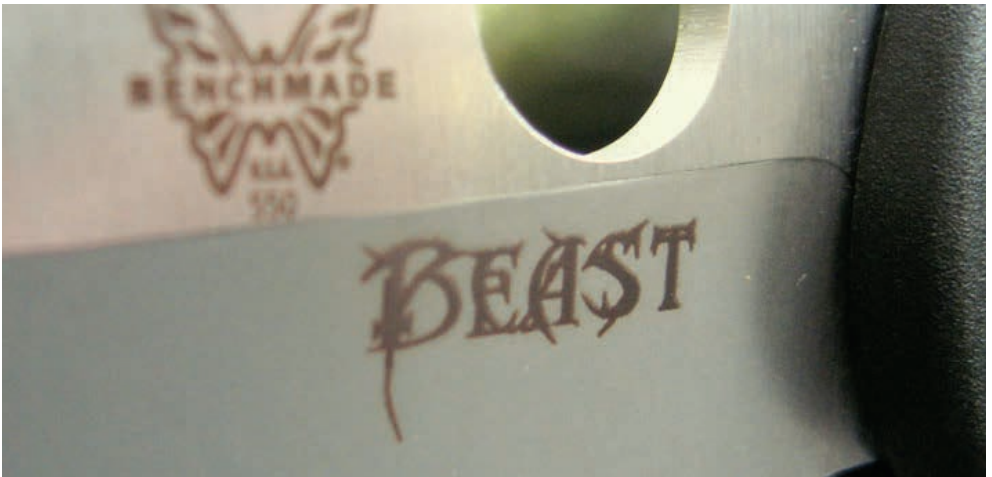
SPECIAL SERVICES



LIFESHARP SERVICE



We will gladly resharpen your Benchmade knife to a factory razor-sharp edge (service does not apply to any serrated portion of the blade). Simply ship your knife to us. We will inspect the knife for any warranted repairs and “tune” the knife for optimum performance. Ship the knife to Benchmade, postage-paid and insured. Please enclose your return shipping address. <https://www.benchmade.com/lifesharp-service>



PERSONALIZED LASER MARKING

Make any Benchmade your Benchmade. Commemorate an event, or outfit the unit. Whatever the occasion, now you can have your logo or artwork laser-etched onto any Benchmade. Depending on the particular model, the mark can be placed on the blade or, for some models, on the handle. If you're interested in this special service, simply call a Benchmade customer service representative at 833.557.2526 or visit <https://www.benchmade.com/lasermarking-support>

DESIGNER COLLABORATION

Benchmade believes working with custom designers creates the most innovative and functional designs in the industry. These skilled artisans and craftsmen pour their passion into their work and agonize over every detail. By collaborating with a selection of world-class custom designers, we're able to tap into the newest locking mechanisms, modern materials, and custom blending and finishing techniques.



MEL PARDUE

The most senior design team member, Mel has been grinding sparks, making knives and creating a following for 25-plus years. His style has a class and simplicity all its own. The Pardue collaborations offer great utility to the every day knife user while at the same time presenting an upscale distinction. Less is definitely more with Mel's designs.

McHenry & Williams

BILL MCHENRY & JASON WILLIAMS

Talented designers and developers of several innovations in the knife-making world including the Benchmade AXIS® mechanism.



WARREN OSBORNE

Bridging the gap between custom and production knives, Warren created some of Benchmade's most iconic and loved models like the 940 series, Barrage, Rift and Contego. Warren set very high standards for himself and we are proud that his work has become ingrained in Benchmade's DNA.



SEIICHI NAKAMURA

Engineering was his life's work until he retired to focus his efforts on a passion for custom knife work. He specializes in small Japanese-style folders, gentleman's carry and jewelry knives. His eye for artistry and mechanical engineering make him a perfect fit for the innovative Benchmade team.



SHANE SIBERT

Since 1994, Shane Sibert's goal has been to design and create unique knives that evoke pride of ownership while at the same time perform tasks and challenges with exceptional ease. A lifelong avid backpacker, Shane draws inspiration from hiking throughout the Pacific Northwest's vast wilderness. He's an occasional practitioner of martial arts and enjoys scuba diving in Oregon's chilly waters.



GREG THOMPSON

Greg used an extensive background in mixed martial arts to create the Special Operations Combatives Program (SOCP), a designated program for U.S. Army Special Operations Forces. With over 15 years of experience training Special Operations soldiers, Greg currently works as the Director of Training for the XVIII Airborne Corps at Fort Bragg, NC



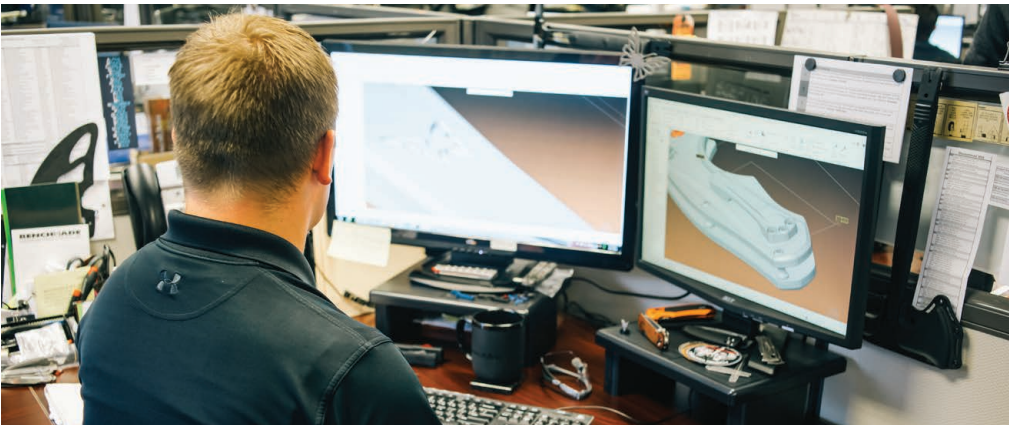
PATRICK FAMIN

For more than ten years, Patrick Famin has been designing and building knives. Originally from France, Patrick now splits his time between France and Florida. His knives are a fantastic blend of every day carry function and unique style, designed to go most anywhere in the world.



JARED OESER

Inspired by a lifetime of art and design, Jared Oeser has quickly established himself as one of the preeminent custom designers in recent years. Working out of his shop in Utah, Jared's goal is to combine modern materials and methodologies with traditional simplicity. Oeser is best known for his highly detailed slipjoint and flipper designs.



LOCKING MECHANISMS

It seems simple enough: you open the knife, you close the knife. But it's the mechanics of motion that happen in the process of opening and closing that can make the difference between ordinary and extraordinary. Is the knife easy to actuate, can it be opened with one hand, is it ambidextrous, and will it be reliable when you need it most? These are all essential considerations when it comes to knife mechanics.

AXIS[®]

A Benchmade original, AXIS[®] has been turning heads and winning fans ever since its introduction. A 100 percent ambidextrous design, AXIS[®] gets its function from a small, hardened steel bar that rides forward and back in a slot machined into both steel liners. The bar extends to both sides of the knife, spans the liners and is positioned over the rear of the blade. It engages a ramped tang portion of the knife blade when it is opened. Two omega-style springs, one on each liner, give the locking bar its inertia to engage the knife tang. As a result, the tang is wedged solidly between a sizable stop pin and the AXIS[®] bar itself. Available in manual, AXIS[®] Assist or Auto AXIS[®] configurations.

OPTION[™] LOCK

The next generation of the ultra strong, ambidextrous AXIS[®] lock. When versatility is key, the patent-pending OPTION[™] lock gives the advantage of having two different blades using the same mechanism; without compromising lockup strength or ease of use.

AXIS[®] ASSIST

Easily opened, quickly and with one hand, this evolution of the AXIS[®] includes a spring that helps fire the blade into the open position once the user pushes it beyond a certain point manually. The AXIS[®] lock also has the added benefit of “suck-back,” which encourages the blade to stay in the closed position. AXIS[®] Assist knives also feature integrated safety lock systems.

LINER LOCK

The basic principle is an integral locking bar, resulting from the knife liner being stress-bent, enabling it to spring into position behind the rear tang of the blade when the blade is opened. The locking bar wedges against the rear of the blade, locking it open until you physically push it clear and close the blade (locking-liners are made either right- or left-hand-specific). And with a modified locking-liner you get a patented feature that helps enhance the lock function. The function success and function failure of a locking-liner depends greatly on how well it is made, and also the quality of the materials used. With Benchmade, you get the best of both.

MONOLOCK

The monolock mechanism is basically a locking-liner on steroids. The knife liner is one and the same as the knife handle, and thus the handle is designed and made to function as the locking mechanism. Subsequently, a thicker material is used to provide enough surface area to be a functional handle and in turn creates a larger surface area to lock the blade with. If executed properly, the monolock design rates very highly in strength and function.

SLIP-JOINT

A back spring-tension hold method found on traditional pocket knives. The spring consists of a piece of steel fixed to the handle. When the blade is rotated, the spring applies varying pressure onto the back of the blade using a camming action. This is not a true locking device because folding the knife requires only that the user overcome the spring pressure in order to rotate the blade back into the handle.

BALI-SONG[®]

As much an art form as it is the ultimate example of form following function. The Bali-Song[®], or butterfly knife, is of Filipino ancestry, dating back to nearly AD 800. Its basic form consists of a pin-hinged, two-piece that which, when closed, encases the blade for carry. Opening and closing can be accomplished with a single hand, making the tool that much more utility-capable.

NITROUS[®]

Another patented Benchmade exclusive, the Nitrous[®] boosts the blade with ease. As the blade is closed, the two torsion arms that run the length of the handle liners are secured in place and make contact with the blade tang. When opening, the user rotates the blade open to a 30-degree angle, where the torsion arms take over and continue the blade-opening process on their own. The huge advantage of the Nitrous[®] design over other similar concepts is that the blade must be rotated open to beyond a 30-degree angle, which offers added user control.

AUTOMATICS

Sometimes restricted to Active-Duty Military, Law Enforcement and Public Safety, these automatic knives utilize either push-button, slide-release or dual-action mechanisms. Benchmade autos take full advantage of powerful springs coupled with our precisely machined lock mechanisms, providing the most reliable automatic systems available in the industry. Our patented integrated safety mechanism, located on the handle spine in all push-button automatics, can also ensure that the blade will not inadvertently deploy, or close once it is locked open.

AXIS[®] AUTOMATIC

Auto AXIS[®] — strong, reliable, fast and an AXIS[®] lock through and through—this locking mechanism fires the blade open 100% mechanically when the AXIS[®] bar is pulled downward. Auto AXIS[®] also features integrated safety mechanisms and the added safety of “suck-back.”

PUSH-BUTTON AUTOMATIC

Push the button and the blade fires into the open position. Our push-button mechanisms are not only fast and convenient, they're also extremely strong. Most also feature integrated safety mechanisms.

OUT-THE-FRONT (OTF) AUTOMATIC

Our OTF mechanisms are mechanical masterpieces. Slide the lock button towards the top and the blade fires straight out. Pull the button back to the bottom and the blade returns into the handle.

FRICTION FOLDER

A friction folding mechanism utilizes low friction washers, in conjunction with a biasing device (spring) to provide constant force against the blade. The biasing spring provides consistent pressure as the washers settle in over time. Users can manipulate the tension of these washers in an effort to achieve the desired level of friction against the action. The extended tang commonly found on friction folders allows the hand to pinch the blade in an open position, without necessitating a traditional locking mechanism.

BLADE STEELS

Benchmade uses a variety of modern materials selected for their superior performance characteristics. We strongly believe that if you're going to put this much effort into designing a premium quality performance cutting tool, then it only makes sense to build it with premium-materials.

KEY

E Edge Retention

S Strength

C Corrosion Resistance

T Toughness

How long a blade can maintain its sharpened edge

Maximum stress withstood before a blade breaks or fails

Resistance of a blade to oxidization and chemical attack

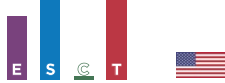
Resistance of a blade to fracture and chipping

STEELS



CPM-S30V HRC: 58-60

A premium steel created especially for knives, it is a powder steel creating uniform carbide distribution and clean steel properties. As a blade material it offers excellent corrosion resistance and superb edge qualities. This stainless steel is extremely well balanced, making it one of the best all-around choices for daily tasks.



CPM-M4 HRC: 62-64

A powder-metal, non-stainless, special purpose high-speed steel with a combination of high carbon, moly, vanadium and tungsten for excellent wear resistance and toughness. Due to its lower level of chrome content it may require additional care to avoid corrosion.



CPM-20CV HRC: 59-61

Excellent edge retention and great corrosion resistance are typically hard to find in one steel; however, they meet here in CPM-20CV. A powder-metal steel that takes a fine edge and maintains it, 20CV is a great choice for someone looking for low maintenance and superior cutting performance.



CPM-S90V HRC: 59-61

A true super-steel, S90V offers substantial improvements in corrosion resistance over 440C and wear resistance far beyond that of D2. Extremely high carbon and vanadium content gives this premium stainless powder-metal alloy the ultimate in edge retention while maintaining great strength and toughness properties.



440C HRC: 58-60

Originally designed for ball bearings, valves and gears, this high-carbon stainless steel is the staple of the cutlery industry. A high-chromium stainless steel with balanced hardness and corrosion resistance, 440C takes a fine edge and is fairly easy to re-sharpen. An excellent value-priced steel for its performance.



CPM-3V HRC: 60-62

A powder-metal tool steel, its high carbon and vanadium paired with low chromium make it exceptionally tough while still being able to maintain a good cutting edge. It may require extra care to keep the rust off, but can handle just about anything thrown at without breaking or edge chipping.



D2 HRC: 60-62

A high-carbon, high-chrome tool steel provides better edge retention than 440C and 154CM; however, it has less toughness and corrosion resistance than either of these alloys. The original "go-to" tool steel for knife blades, D2 provides great edge retention but requires a little extra care to keep the rust off.



M390 HRC: 58-61

A super-performance blade steel with exceptional cutting ability and wear resistance. Given its uniform microstructure, M390 is often used in surgical cutting instruments and other applications that require a high finish. Extremely high carbon and chrome content also gives this premium stainless powder-metal alloy the best corrosion resistance of any martensitic stainless alloy.



Damasteel HRC: 58-60

With alternating layers of RWL34 and RPM27, this powder metal 'Damascus' steel doesn't just get by on its looks alone. The interweaving of these two alloys provides great strength and toughness while affording edge retention comparable to that of 440C. Used in special applications due to its high cost and artistic nature.



N680 HRC: 57-59

A special-application steel for when corrosion resistance is the primary requirement. Ideal for salt water applications, the addition of nitrogen to the alloy gives this the best corrosion resistance of any blade steel, with edge retention between 420HC and 440C.



154CM HRC: 58-61

A premium-grade steel developed for tough industrial applications. Known best for its all-around qualities, 154CM offers a good balance of corrosion resistance, toughness and edge quality.

HEAT TREATMENT

Over the years we have developed a "special recipe" for heat-treating our blade steels. This process maximizes the steel's molecular structure for a custom toughness and superior performance. All steels may be created equal, but when it comes to Benchmade, that's where it stops.

COATINGS, LINERS, SHEATHS, HANDLES

COATINGS

CERAKOTE®

A spray-on poly-ceramic coating with excellent wear and corrosion resistance. Used frequently in the firearms industry, and available in a wide variety of colors.

DLC

'Diamond-like Carbon,' is a thin layer of carbon atoms that is slowly built up on the surface, providing a sleek black look, a hardness similar to natural diamond, and excellent abrasion resistance. DLC is also used as a coating in machining, stamping and molding tools, as well as engine components.

PVD

PVD, or Physical Vapor Deposition, is a process used to apply super-hard coatings like DLC and chromium nitride. Done in an ultra-high vacuum, the result is a thin but dense layer with far fewer atomic defects than what other processes are capable of, and which gives superb scratch resistance that is ideal for everyday applications.

ANODIZATION

An electrochemical process used for adding color to titanium surfaces. A combination of chemical bath and electrical voltage level generates the desired color. A similar process is used for aluminum, with the addition of a chemical coloring bath.

LINERS

6AL-4V TITANIUM

Considered an exotic metal alloy (titanium + 6% aluminum + 4% vanadium) with an excellent strength-to-weight ratio that offers exceptional performance in a knife. Titanium is corrosion-resistant to natural elements as well as many industrial chemicals.

410SS STAINLESS STEEL

A common knife grade with low-carbon, high-chromium-content steel that offers excellent bend toughness and wearability. It offers excellent corrosion resistant characteristics as well.

SHEATHS

BALLISTICS NYLON

A heavy-duty woven nylon fabric originally developed for use in bulletproof vests and body armor. Offers great lightweight sheath durability.

LEATHER

A natural material dating back to humans' earliest beginnings in the knife world. It can be easily dyed and tooled for a desired visual effect. Offers traditionally accepted levels of performance and design capability.

KYDEX®

A mixture of acrylic and PVC that offers outstanding impact and chemical resistance as well as fire retardancy. Widely used in the auto and aerospace industries. Molded or thermo-formed.

BOLTARON®

A proprietary, fire-retardant PVC/acrylic alloy sheet, black in color, offering a UL Standard 94 V-0 fire rating, excellent impact strength, abrasion resistance, chemical resistance and thermoformability. Manufactured using recycled resin, it is a cost-effective alternative to other general-purpose flame-retardant materials.

HANDLES

CARBON FIBER

A contemporary premium composite of thin strands of carbon tightly woven into various weave patterns, then impregnated with resin that is most commonly clear but can be color-tinted. It offers great looks and is exceptionally strong for its minimal weight.

STABILIZED WOOD

A composite material backfilled with resin, stabilized wood is much more resistant to environmental hardships than natural wood.

6AL-4V TITANIUM

Considered an exotic metal alloy (titanium + 6% aluminum + 4% vanadium) with an excellent strength-to-weight ratio that offers exceptional performance in a knife. Titanium is corrosion-resistant to natural elements as well as many industrial chemicals.

MICARTA

Layers of linen cloths soaked in resin and compressed together. Most commonly used on more stylish knives due to its rich color and finish qualities.

6061-T6 ALUMINUM

A nonferrous metal originally developed as a premium aircraft-grade aluminum, it offers a solid handle form and function at a nominal weight. Most typically color-anodized.

G10

An extremely durable makeup of layers of fiberglass soaked in resin, then highly compressed and baked. Impervious to moisture or liquid and physically stable under a wide range of temperatures. Most commonly black, but is also available in various colors.

GRIVORY®

An amorphous nylon copolymer with exceptional dimensional stability. 50% or greater glass fill.

SANTOPRENE®

A thermoplastic elastomer that is molded to specification. It offers excellent flexibility with high tear strength and fatigue resistance. Resistant to many harsh chemicals. These features contribute to improved performance in a range of tough jobs.

CF-ELITE™

A molded polymer that incorporates strands of carbon fiber, CF-Elite™ is up to 17% lighter and 50% stiffer than traditional glass-filled polymers.

RICHLITE

Handmade using layered paper infused with a thermosetting resin, Richlite was created in the Pacific Northwest in 1943. Originally used for machine tooling in the aerospace industry, the durability, sustainability, and versatility of Richlite provide a material that is just as stylish as it is functional.

The following are registered trademarks of their respective companies: Zytel®, E.I. du Pont de Nemours & Company; Kydex®, Kleeindex Company; Noryl GTX® and Valox®, General Electric Company; Santoprene®, Advanced Elastomer Systems; Grivory®, EMS-Grivory; Boltaron®, Boltaron Performance Products, LLC.



WARRANTY

LIMITED LIFETIME WARRANTY

Benchmade Knife Company, Inc. ("Benchmade") warrants to the original purchaser that their genuine Benchmade knife purchased from Benchmade or one of its authorized sellers will be free from defects in materials and workmanship from the date of purchase for as long as said purchaser owns the knife that was purchased. This warranty applies only to knives that were purchased from Benchmade or an authorized Benchmade seller with proof of purchase, unless otherwise prohibited by law. Benchmade knives are legitimately sold only by authorized sellers who are required to follow Benchmade's policies, procedures, and quality control standards. Benchmade reserves the right to reject warranty claims from purchasers for knives purchased from unauthorized sellers, including unauthorized Internet sites. Benchmade will repair or replace a defective knife that is covered by this warranty at Benchmade's option.

WHAT IS NOT COVERED?

This warranty does not cover defects due to normal wear and tear, re-sharpening of the blade, damage due to neglect, misuse, lack of normal or necessary maintenance, alteration or disassembly of the knife by any third party, or negligence.

Do not use your knife as a screwdriver, pry bar, chisel or punch. Do not throw your knife or use it for any purpose other than cutting. Do not disassemble your knife. Do not sharpen your knife on a power grinding wheel. Any of these acts will void this warranty. **MINIMUM CHARGE TO REASSEMBLE A KNIFE WHEN THIS WARRANTY HAS BEEN VOIDED IS \$20 PLUS PARTS.** Blade replacements outside of warranty may also be purchased.

This knife has only one use, as a cutting tool. Benchmade knives carry no warranty except as expressly contained herein. Benchmade disclaims all warranties of merchantability and fitness for a particular purpose other than for use as a cutting tool. Any implied warranties that may be applicable to Benchmade products, including implied warranties of merchantability or fitness for a particular purpose, are limited in duration to the duration of this warranty. Some States do not allow limitations on how long an implied warranty lasts, so the above limitation may not apply to you. Under no circumstances shall Benchmade be liable for any special, incidental, or consequential damages based upon breach of this warranty, breach of contract or strict liability. Some States do not allow the exclusion or limitation of incidental or consequential damages, so the above limitation or exclusion may not apply to you. This warranty gives you specific legal rights, and you may also have other rights which vary from State to State.

Please review the warranty information and proper knife care instructions provided with each knife.

WARRANTY EXCLUSIONS:

Knives purchased on the Internet through unauthorized websites, mail order outlets, or through any other unauthorized source, and knives which are determined by Benchmade to be counterfeit are excluded from coverage under this warranty.

Any Benchmade knife that is modified from its original factory condition will void the warranty. Benchmade is not responsible for parts or treatments added to or removed from the knife or for knives that are otherwise modified in any way, as these may cause the knife to function differently (and potentially less safely) than originally designed and intended.

TO SUBMIT A WARRANTY CLAIM:

The knife must be shipped by owner to the address provided below, postage prepaid and insured freight (optional), together with the Benchmade Warranty Service Form (available at www.benchmade.com/warranty-service or by calling 1-833-557-2526).

Benchmade Knife Company, Inc.
Attn: Product Services
300 Beaver Creek Rd.
Oregon City, OR 97045

Any automatic knife (button activated spring-opening) returned for warranty service from outside of Oregon must also include either a signed copy of the Auto Knife Opening Acknowledgment ("AKOA") Form, or your web account username if you have already signed and accepted the AKOA. Otherwise, the knife must be returned through the authorized Benchmade seller from which the knife was originally purchased. No exceptions will be made.

Automatic knives will be returned in compliance with Federal law.

ORDERING OF AUTOMATIC KNIVES

Automatic knives are available for sale in Oregon. The sale of automatic knives is federally regulated. Always check permissibility within your state or locality as non-federal personnel may be precluded from ownership or use by state laws. **NO EXCEPTIONS WILL BE MADE.** Purchase of automatic knives outside of the state of Oregon must be preceded by the submission of an AKOA form.

The Benchmade AKOA form can be found at:

www.benchmade.com/media/forms/ako_acknowledgment.pdf

SHIPPING OF AUTOMATIC KNIVES

All automatic knives shipped by Benchmade will be sent via courier (UPS, FedEx, etc.) and CANNOT be shipped through the U.S. Postal Service. Also, please note that all returns of automatic knives must be shipped via courier (UPS, FedEx, etc.). It is our policy that all automatic knives shipped out of state require a signed AKOA form. We will not ship automatic knives out of state until we receive a signed AKOA form.

ARE BENCHMADE ASSIST-OPEN KNIVES LEGAL?

Because of the way the Benchmade assist-open knives are designed and built, they are not considered automatic or switchblade knives under federal interpretations.

Even though the Benchmade assist-open models are not classified as automatics or switchblades, it is still recommended that the user research and verify the legalities in their own specific areas.

COMPLIANCE WITH LAWS, ASSUMPTION OF RISK, RELEASE OF LIABILITY, INDEMNITY

The purchase, use, and ownership of knives is subject to a wide variety of federal, state, and local laws and regulations. Knife laws and regulations are subject to local interpretations and may change frequently. It is the responsibility of the buyer to be aware of and to comply with the laws that govern the buyer in the buyer's specific area, pertaining to owning, carrying, transporting, shipping, and using the product.

We encourage responsible ownership.

THE KNIFE IS VERY SHARP. USE WITH CARE. BE SMART AND SAFE. KEEP OUT OF REACH OF CHILDREN. MISUSE OF THE PRODUCT OR FAILURE TO PROPERLY MAINTAIN YOUR PRODUCT CAN CAUSE MECHANISMS IN THE PRODUCT TO NOT FUNCTION PROPERLY AND COULD CAUSE DAMAGE TO THE PRODUCT AND/OR SERIOUS INJURY OR EVEN DEATH.

You expressly release Benchmade from, and you expressly agree to indemnify and hold harmless Benchmade for, all claims, damages, liabilities, losses, and expenses (including reasonable attorneys' fees) resulting directly or indirectly from your purchase, ownership, transportation, shipment, use, or misuse of your product in violation of any federal, state, or local law, rule, or regulation. Except for the express product Warranty provided herein, Benchmade will not be held responsible or liable for your purchase, ownership, transportation, shipment, use, or misuse of any Benchmade product purchased, either directly from Benchmade or from any retail dealer.



Benchmade is proud to be a charter member of AKTI. Get involved. Help protect your knife freedoms. Join AKTI today!

877.752.8770 or www.akti.org

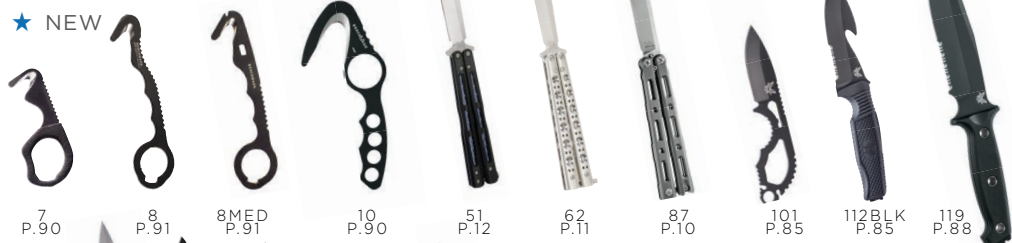
PRICING

Every effort is made to ensure the accuracy of the prices and information presented in this catalog. However, we reserve the right to rectify any and all errors prior to any sale transactions. Prices shown are at suggested retail (U.S. currency). Actual purchase prices may vary. All pricing and product specifications are subject to possible change without prior notice. Visit www.benchmade.com for the latest information.

The following are trademarks or registered trademarks of Benchmade Knife Company, Inc. or trademarks or registered trademarks of Mentor Group, L.L.C. and used under license: 87; Adams; Aileron; Allier; Altitude; Anthem; Arcane; Autocrat; AXIS; Azeria; Bailout; Ball-Song; Ball-Song (butterfly logo); Barrage; Bedlam; Benchmade; Benchmade (butterfly logo); Benchmade (wordmark logo); Benchmade HUNT (wordmark logo); BlueLube; Boost; Bugout; Butterfly (wordmark logo); Cashab; Cascabel; Coalition; Custom Knife Builder (wordmark logo); Dualist; Emissary; Fact; Follow-Up; Freek; Genuine AXIS Mechanics (logo); Griptilian; Grizzly Ridge; Impel; Infidel; Mediator; Morpho; Nimravus; Om; Option; Outlast; Pacifist; Pagan; Phaeton; Pika; Precipice; Presidio; Presidio Ultra; Proper; Rift; Rolling Lock; Salbu; Sequel; Stryker; The Edge of Perfection; Triage; Turret; Vallation; Vector. • NOTE: We reserve the right to make any design and/or material modifications without prior notice. • Benchmade products may be manufactured under one or more of the patents found at <https://www.benchmade.com/patents>

PRODUCT INDEX

★ NEW



7 P.90 8 P.91 8MED P.91 10 P.90 51 P.12 62 P.11 87 P.10 101 P.85 112BLK P.85 119 P.88



125 P.84 133 P.86 140 P.89 141 P.89 162 P.39 162-1 P.39 175 P.84 173 P.82 176 P.81 176T P.83 178 P.81 179 P.83



200 P.38 275 P.74 318 P.34 318-2 P.34 319 P.34 319-2 P.34 365 P.77 375 P.87 380 P.36 381 P.37 ★391 P.80 ★391T P.80 407 P.69



417 P.72 427 P.70 470-1 P.16 477 P.16 477-1 P.16 484 P.32 484-1 P.32 485 P.31 486 P.33 490 P.13 495 P.14



496 P.15 ★533 P.26 ★533-1 P.26 535 P.25 535-1 P.26 ★535-2 P.25 537 P.71 ★537-1 P.71 550-S30V P.23 550-1 P.23 551-S30V P.23



551-1 P.23 553-S30V P.23 555-S30V P.24 555-1 P.24 556-S30V P.24 556-1 P.24 557-S30V P.24 560 P.22 560-1 P.22 565 P.22 ★570-1 P.67