

# CZ 557

INSTRUCTION MANUAL  
MANUAL DE INSTRUCCIONES  
NÁVOD NA POUŽITÍ  
BEDIENUNGSANLEITUNG  
MODE D'EMPLOI



CZ 557 Lux



**Before handling the firearm read this manual carefully and observe the following safety instructions.**

Improper and careless handling of the firearm could result in accidental discharge and cause injury, death or damage to property. The same repercussions can be caused by unauthorized modifications or adjustments, corrosion, or use of non-standard or damaged ammunition. In these cases the manufacturer shall not be held responsible in any manner whatsoever for the resulting consequences.

Before leaving the factory the firearm was tested, inspected and packaged in accordance with company policy. Ceska zbrojovka a.s. cannot accept responsibility for product handling whilst in transit after dispatch from the factory. Therefore, examine the firearm carefully upon receipt to ensure that it is unloaded and undamaged.

This instruction manual should always accompany the firearm in the event of loan or further sale.

**CONTENTS**

SAFETY INSTRUCTIONS	3	MAINTENANCE INSTRUCTIONS	9
THE RIFLE DESCRIPTION AND TERMINOLOGY	5	Stripping for Cleaning - Disassembly	9
OPERATING INSTRUCTIONS	7	Disassembly of the Bolt	10
Ammunition	7	Cleaning the Rifle	10
Loading of the Rifle	7	Cleaning the Barrel and the Chamber	10
Unloading of the Rifle	8	Cleaning of Other Rifle Parts	11
The Safety and its Operation	8	Preservation of Rifle	11
Cocking Indicator Operation	8	Waste Management	11
Trigger Mechanism Adjustment	8	TROUBLESHOOTING	12
Sight Adjustment	9	LIST OF PARTS	13
Rifle Scope	9	TECHNICAL SPECIFICATIONS	14
		LIST OF ILLUSTRATIONS	16

**SAFETY INSTRUCTIONS**

Always follow the safety instructions for your safety and the safety of others.

1. Always handle your firearm as if it were loaded.
2. Never point the firearm at anything you do not intend to shoot at. Also never point a firearm at anybody even in fun.
3. Never take anyone's word that the firearm is unloaded.
4. Always make sure that your firearm is not loaded before laying it down, or handing it over to another person.
5. Always store the firearm unloaded with the striking mechanism released.
6. Never abuse the firearm by using it for any purposes other than shooting.
7. Never leave a firearm unattended.
8. Prior to loading the firearm ensure the barrel, chamber and action are clean and clear of obstructions. If the firearm becomes excessively dirty during firing clean it immediately. Always clean the firearm after use.
9. Always use clean and dry original high quality commercially manufactured ammunition, which corresponds to the caliber of the firearm.
10. Never drink alcohol or take drugs before and during shooting.
11. Whenever practical always wear safety glasses and ear protection while shooting.
12. Always keep the safety on when the firearm is loaded with a cartridge in the chamber, until you are ready to fire. Keep the firearm pointed in a safe direction when disengaging the safety.
13. Always keep the ejection port clear of obstructions and people.
14. Never pull the trigger or put your finger within the trigger guard unless you are aiming at a target and ready to fire.
15. Always make absolutely sure of your target and the area behind it before pulling the trigger. The bullet can pass through or past the target up to several hundred meters.

16. Never shoot at a hard surface such as rock, or a liquid surface such as water.
17. Never fire near an animal unless it is trained to withstand the noise.
18. Never indulge in "horseplay" while holding the firearm.
19. Failure to fire: In case it fails to fire, hold the firearm keeping it pointed in a safe direction and wait 30 seconds. If a hangfire (slow ignition) has occurred, the cartridge will fire within 30 seconds. If the cartridge does not fire, eject the cartridge and examine it. If the firing pin indent on the cartridge is light, or non-existent, have the firearm examined by a competent gunsmith.
20. Always make sure your firearm is not loaded before cleaning, storing or travelling.
21. Always keep and store your firearm and ammunition in separate secure locations out of reach and sight of children and unauthorized persons.
22. Never alter any parts of your firearm; the safety and proper function of your firearm could be seriously affected.
23. Always be aware that corrosion, use of damaged ammunition, dropping the firearm on hard surfaces or other "rough treatment" can cause damage that is not necessarily obvious at first sight. If something like this happens, have the firearm examined and tested by a competent gunsmith.

## THE RIFLE DESCRIPTION AND TERMINOLOGY

The names of basic rifle parts used in this Instruction Manual are presented in Fig. 1 on the inner side of the cover. Nomenclatures of all CZ 557 parts are presented in the section *List of Parts*.

The CZ 557 is a bolt action rifle provided with the Remington bolt. The trigger mechanism of the rifle does not feature a set-trigger; the trigger as such can be adjusted in pull weight and travel. The safety secures the rifle against accidental discharge. The top of the receiver has milled grooves to accommodate scope mounts. The rifle is produced in several versions. Characteristic features of all versions are:

- a wide assortment of calibers, allowing for optimum choice of caliber - according to the particular use of the rifle
- the rifle is well-balanced and consequently quick and easy to aim
- easy mounting of rifle scope
- controlling elements, which are simple in operation, and easy to reach
- completely adjustable trigger mechanism
- cocking indicator indicates the position of the striking mechanism
- easy stripping for cleaning and routine maintenance, which can be carried out without any tools
- a high degree of accuracy when firing
- a long service life
- high functional reliability in all environments, even with ammunitions made by various manufacturers, and with different types of bullets

**Brief Characterisation of the Basic Versions****CZ 557 Lux**

Made from high quality walnut wood, the stock is provided with a cheekpiece of the Bavarian type and it is treated with an oiled surface finish; moreover, it is provided with checkering and a rubber butt plate. The front sight of the rifle is adjustable for elevation and it is supplied with a fibre optic, while the rear sight can be adjusted for windage. The barrel of the rifle is floating.

**CZ 557 Sporter**

The stock of this model is made of beech or walnut wood and it does not feature a cheekpiece; it is provided with checkering and a rubber butt plate. This rifle was designed exclusively for shooting with a scope. Its barrel is floating.

**CZ 557 Synthetic**

The soft-touch stock of this rifle is provided with grooves and roughened areas on the gripping points and with a rubber butt plate. It can also be supplied with fixed sights or without sights.

**CZ 557 Predator**

The stock of this model is made of plastic with Soft-Touch finish and Real Tree camouflage. It is provided with grooves and roughened areas on the gripping points and with a rubber butt plate. It can also be supplied with fixed sights or without sights.

**CZ 557 Carbine**

The stock of this model is made of walnut wood and is provided with a cheekpiece, checkering and a rubber butt plate. It allows aiming through open sights as well as optical sight. The height adjustable front sight is fitted with luminescent fibre. The rear sight is rotary and adjustable to the sides. It has a floating barrel.

**CZ 557 Range Rifle**

The stock of this model is made of beech wood, without a cheekpiece and is provided with checkering and a rubber butt plate. It allows aiming through open sights as well as optical sight. The height adjustable front sight is fitted with luminescent fibre. The rear sight is rotary and adjustable to the sides. It has a floating barrel, trigger mechanism with two switchable trigger pull values, safety with locking of the bolt.

**CZ 557 Varmint**

The stock of this model is made of walnut wood, without a cheekpiece, with high crest and is provided with checkering and a rubber butt plate. It has a heavy sports floating barrel. It is intended for shooting only with optical sights.

## OPERATING INSTRUCTIONS

### Ammunition

Use only factory-manufactured ammunition of appropriate caliber, which are in compliance with CIP regulations (International Proof Commission for Firearms) or SAAMI (Sporting Arms and Ammunition Manufacturers' Institute Inc. of the United States). The use of other cartridges could damage the firearm or cause injury to the shooter.

### Loading of the Rifle

ALWAYS MAKE SURE THE RIFLE IS POINTED IN A SAFE DIRECTION WHEN LOADING!

#### Box version

Open the bolt by raising the bolt handle and pulling it to its rearmost position. Place a cartridge on the follower and press it downward into the magazine box. After releasing the downward pressure, the cartridge is caught by the side walls of the box shell. Place the next cartridge on top of the previous one, and push in as described above. After loading the magazine box, use your thumb to push the last cartridge slightly to allow even arrangement of the entire cartridge column. When the magazine box is loaded, push the bolt firmly to its forward position, and rotate the bolt handle in a downward movement to close the bolt. This procedure inserts a cartridge into the chamber, and cocks the striking mechanism. The rifle is now ready to fire. If you do not intend to fire immediately ensure the safety of the firearm is applied as described further in the section *The Safety and its Operation*.

#### Magazine version

Open the bolt by raising the bolt handle and pulling it to its rearmost position. Replace the magazine. Place a cartridge on the follower and press it downward into the magazine box until it snaps behind the magazine mouth. Place the next cartridge on top of the previous one, and push in as described above. When the magazine box is loaded, push the bolt firmly to its forward position, and rotate the bolt handle in a downward movement to close the bolt. This procedure inserts a cartridge into the chamber, and cocks the striking mechanism. The rifle is now ready to fire. If you do not intend to fire immediately ensure the safety of the firearm is applied as described further in the section *The Safety and its Operation*.

## Unloading of the Rifle

ALWAYS MAKE SURE THE RIFLE IS POINTED IN A SAFE DIRECTION!

- press the floor plate latch (Fig. 2) open the magazine box and drop the released cartridges into your hand or press the magazine latch and remove the magazine
- open the bolt and check the cartridge has been extracted from the chamber and ejected
- close the bolt
- if the safety is engaged, move it to its "Safety-Off" position and pull the trigger (dry fire)

## The Safety and its Operation

Move the safety rearward to its "Safety-On" position (Fig. 3). This procedure locks the trigger mechanism so it is not possible to discharge a cartridge. The safety is made in two versions - either with or without locking of the bolt. The version with locking of the bolt does not allow opening of the bolt after locking. The version without locking of the bolt allows opening and safe handling of the bolt.

## Cocking Indicator Operation

The cocking indicator is located on the rear face of the bolt sleeve. If the striking mechanism is cocked, the cocking indicator protrudes from the bolt sleeve and its red part can be observed (Fig. 4). This protrusion can be checked both by sight and by touch.

## Trigger Mechanism Adjustment

### Trigger mechanism with single pull trigger

The trigger mechanism can be adjusted with respect to trigger pull weight and trigger travel, both prior to and after firing. The adjustment of the trigger pull and after-firing trigger travel (Fig. 5) can be performed by the adjusting screws A (trigger pull) and B (trigger travel) once the stock has been removed. When adjusting the pre-firing trigger travel, use the screw C located in the trigger (Fig. 6).

### Trigger mechanism with dual pull trigger

The trigger mechanism allows adjustment of a second trigger pull using the trigger pull screw D (Fig. 7). The adjustment of the trigger pull can be performed once the stock has been removed. Free travel of the trigger can be adjusted using the adjusting screw F located in the trigger. The travel after firing can be adjusted using the adjusting screw E.



For security reasons, do not set the trigger pull too low and the trigger travel too short because the rifle could unintentionally discharge a cartridge when being handled improperly. Check the trigger adjustment is safe on the unloaded rifle by opening and closing the bolt repeatedly and moving the safety to on- and off- safe position. During this safety check, the rifle must not discharge.

### Sight Adjustment

The elevation adjustment of the front sight is carried out by means of the two front screws (Fig. 8). The windage adjustment of the rear sight is carried out by the two screws located in the rear sight blade (Fig. 9).

#### Notes:

The rear sight as such can be reversed by 180° so that the rear sight blade can be leaned either in the direction of fire or against it. When exchanging the front sight it is necessary to slightly extend the front sight cover prior to removing it; thus you will prevent from damage to the front sight base.

### Rifle Scope

Mounting of the riflescope and sighting-in of the rifle should be entrusted to a qualified gunsmith's workshop.

## MAINTENANCE INSTRUCTIONS

### Stripping for Cleaning - Disassembly

1. Open the magazine box and remove the cartridges from it or press the magazine latch and remove the magazine.
2. Open the bolt, and depress the bolt stop (Fig. 10), then pull the bolt out of the rifle. In order to depress the bolt stop it is possible to use the edge of a cartridge case, for example.
3. Check that fastening screws (items 66 and 67) are tight, and tighten them if necessary.

No further disassembly is needed for routine maintenance. When a great number of cartridges has been fired have the rifle disassembled and the bolt cleaned by a gunsmith's workshop.

### Disassembly of the Bolt

BEFORE BOLT DISASSEMBLY CHECK FOR YOURSELF THAT THE CHAMBER IS EMPTY!

Remove the bolt out of the rifle as previously described. Release the striking mechanism by twisting the bolt sleeve by 90° anti-clockwise (Fig. 11). Remove the bolt handle pin, take out the bolt handle as well as the firing pin.

**CAUTION:** Do not strip your firearm any further. If you assume that your firearm requires adjustment or repair, entrust this work to a competent gunsmith in a specialized workshop!

### Cleaning the Rifle

Clean the Rifle

- each time you use it
- if you get your rifle wet
- as soon as possible after shooting
- at least once a year in a temperate climate
- as often as once a month in a tropical climate, or other demanding environments

### Cleaning the Barrel and the Chamber

If the firearm has not been fired or if only a few cartridges have been fired clean the barrel and cartridge chamber with a clean patch attached to the cleaning rod. Repeat the cleaning, changing patches, until the last patch comes out clean. When the barrel is very dirty, apply a gun cleaning solution using cleaning brush. Let the solvent act for about 10 minutes (this time may vary depending on the solvent agent being used). Then thoroughly scrub out the barrel. Subsequently, dry the barrel and cartridge chamber with a clean patch and check that all powder residues, or fouling have been removed. If necessary, repeat this procedure.

The cleaning rod and the brush must be inserted into the barrel from the chamber, to prevent wear or damage to the muzzle. Pass the brush all the way through the barrel before reversing the movement. If you try to change directions with the brush in the barrel, the brush could stick.

**Cleaning of Other Rifle Parts**

Other parts of the rifle can be cleaned with a dry cloth, old toothbrush, copper bristle brush or a wooden scraper. Preserving oil or paraffin oil can be used for proper cleaning. Never use the agent designed for barrel bore cleaning! These solutions could remain in the joints, and after some time could cause corrosion. Check that cloth particles or brush bristles have not become lodged in any part of the rifle.

**Preservation of Rifle**

When the barrel, chamber, and all accessible parts are clean and dry, wipe these parts with a cloth soaked in gun oil or apply an oil in spray form. Remove all excess oil.

Before shooting always pull through the barrel with dry patch. At very low temperatures remove the oil from all accessible parts or apply a lubricant especially for these conditions. Use thick preserving agents such as preserving grease only for long-term storage in severe climatic environments, and remove it thoroughly before use from all parts of the firearm.

**Waste Management**

When used properly, the materials used in the product and its packaging have no adverse effects on human health or the environment. When disposing of the product or its packaging, all metal parts (steel and non-ferrous metals), plastics, wood, paper and cardboard should be stored separately in collecting containers intended specifically for that purpose.

## TROUBLESHOOTING

If your firearm is properly used and maintained, malfunctions will rarely occur. However, if such a situation does occur please observe the following instructions.

**CAUTION** - if a malfunction occurs, the possibility of an accidental discharge is substantially higher. For this reason, when clearing malfunctions, follow the above mentioned Safety Instructions. Keep the rifle pointed in a safe direction, do not turn the rifle against your body or anyone else's. Do not place your hands in front of the barrel!

Malfunction	Possible Cause	Remedy
A cartridge has not been fed into the chamber	The rifle or cartridges are fouled (dirty).	Clean the rifle and cartridges and wipe them dry or as the situation dictates, slightly lubricate.
Misfire	Defective cartridge. Firing Pin hole is fouled (dirty) or improper lubricant was used in low temperature conditions.	Follow the Safety Instructions according to point 19. Disassemble and clean the firing pin or use low temperature lubricant.
A shot sounds "weak"	The cartridge has been activated but no powder load was inside the cartridge case.	Unload the rifle and check that the bullet has not obstructed the barrel. Any subsequent shot could cause damage to the barrel!
The spent case has not been ejected	Chamber, extractor or ammunition dirty or unsuitable lubricant in low temperatures.	Clean and wipe the rifle dry or eventually lubricate lightly with a suitable agent. Use clean and new ammunition.

If you are not able to clear the malfunction in a manner described above, entrust the firearm to a competent gunsmith for inspection and repair.

## LIST OF PARTS

1 Barrel	25 Pin (3x)	46 Ejector spring	71 Floor plate
2 Front sight base	26 Trigger pull adjusting screw (A)	47 Bolt handle	72 Floor plate pin
3 Front sight base screw (2x)	27 Trigger pull adjusting screw spring	48 Bolt handle knob	73 Floor plate latch
4 Front sight cover	28 Trigger pull adjusting screw lock nut	49 Bolt handle pin	74 Floor plate latch spring
5 Front sight	29 Trigger overtravel adjusting screw (B)	50 Firing pin	75 Barrel insert
6 Front sight pin	30 Nylon pin of the trigger overtravel adjusting screw	51 Firing pin spring	76 Magazine frame
7 Fiber optic	31 Trigger unit securing screw	52 Firing pin spring ring	77 Magazine latch
8 Front sight adjusting screw A	32 Trigger unit securing screw washer	53 Firing pin spring nut	78 Magazine latch pin
9 Front sight adjusting screw B	33 Firing pin catch	54 Firing pin nut	79 Magazine latch spring
10 Rear sight base	34 Firing pin catch spring	55 Firing pin nut pin	80 Magazine latch spring pin
11 Rear sight base screw (2x)	35 Sear stop	56 Bolt sleeve	81 Follower
12 Rear sight blade	36 Safety plunger	57 Cap	82 Magazine shell
13 Rear sight adjusting screw (2x)	37 Roller	58 Stock	83 Magazine spring
14 Receiver	38 Roller pin	59 Butt plate	84 Magazine floor plate latch
15 Safety	39 Safety plunger pin	60 Butt plate screw (2x)	85 Magazine floor plate
16 Safety stop (2x)	40 Bolt	61 Swivel stud (2x)	86 Trigger holder
17 Bolt stop	41 Extractor	62 Sling swivel (2x)	87 Trigger
18 Bolt stop spring	42 Extractor pin	63 Swivel screw (2x)	88 Trigger pin
19 Bolt stop pin (2x)	43 Extractor spring	64 Swivel screw rest (2x)	89 Trigger spring
20 Trigger	44 Ejector	65 Trigger guard - box version	90 Free travel screw (F)
21 Adjusting trigger screw (C)	45 Ejector pin	66 Fastening screw, front	91 Trigger lever
22 Trigger pin		67 Fastening screw, rear	92 Trigger pull screw (D)
23 Nylon pin of the adjusting trigger screw		68 Follower	93 Adjustment screw spring
24 Trigger holder		69 Follower spring	94 Adjustment screw nut
		70 Box shell	95 Trigger lever set screw (E)
			96 Nylon pin (2x)

**TECHNICAL SPECIFICATIONS**

Model	Lux	Sporter	Synthetic, Predator	Carbine
Caliber (box version)	6,5x55 SE 7x64 8x57 IS .243 Winchester .270 Winchester .308 Winchester .30-06 Springfield	6,5x55 SE 7x64 .243 Winchester .270 Winchester .308 Winchester .30-06 Springfield	7x64 .308 Winchester .30-06 Springfield	6,5x55 SE 7x64 8x57 IS .243 Winchester .270 Winchester .308 Winchester .30-06 Springfield
Magazine box capacity [cartridges]	5	5	5	5
Overall Length [mm]	1063	1042	1037	1053
Barrel Length [mm]	520	520	520	520
Sight Radius (Open Sights) [mm]	340	-	340	340
Weight (Empty Magazine) * [kg]	~ 3,4	~ 3,3	~ 3,3	~ 3,4
Trigger Pull, Adjustment Range ** [N]	10 - 22			

## INSTRUCTION MANUAL

Model	Lux	Sporter	Varmint	Range Rifle
Caliber (magazine version)	.243 Winchester .308 Winchester	.243 Winchester .308 Winchester	.308 Winchester	.308 Winchester
Magazine capacity [cartridges]	4	4	10	10
Overall Length [mm]	1042	1021	1163	1021
Barrel Length [mm]	520	520	650	520
Sight Radius (Open Sights) [mm]	340	-	-	340
Weight (Empty Magazine) * [kg]	~ 3,4	~ 3,3	~ 4,9	~ 3,5
Trigger Pull, Adjustment Range ** [N]	10 - 22			22 - 29

\* depends on the material of the stock and the caliber of the rifle

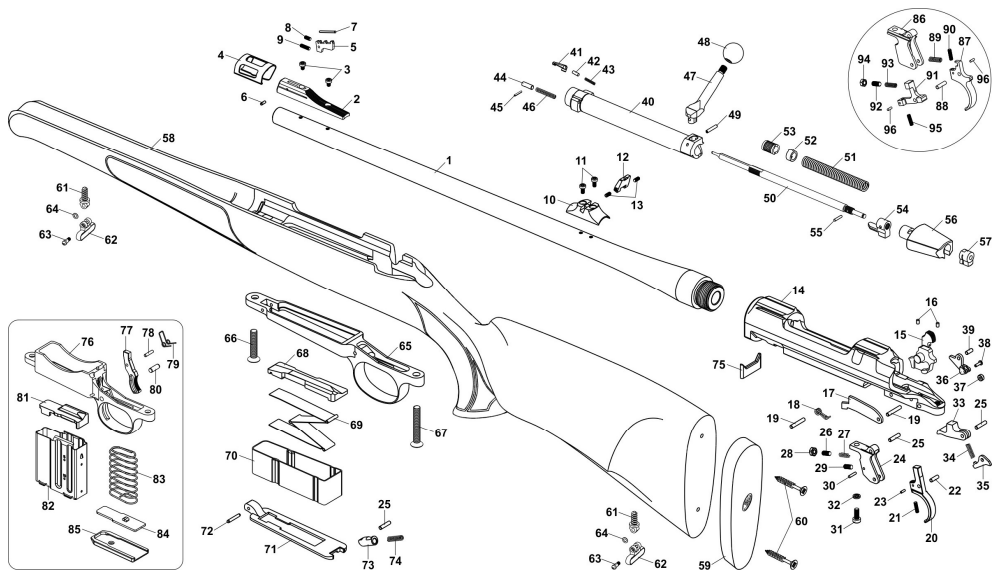
\*\* the rifles are adjusted according to the standards and regulations of the country of delivery

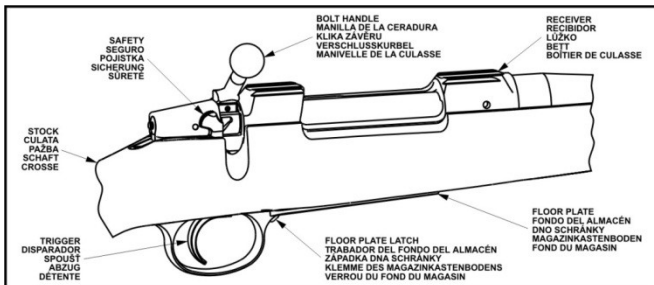
**LIST OF ILLUSTRATIONS**

1. Basic rifle parts
2. Opening the magazine box
3. Safety-on position
4. Cocking indicator engaged
5. Single pull trigger adjustment
6. Single pull trigger adjusting screw
7. Dual pull trigger adjustment
8. Front sight adjusting screws, detail
9. Rear sight adjusting screws, detail
10. Pressing the bolt stop
11. Removing the bolt

The Company, reserves the right to make changes it thinks necessary to improve its models or to meet any requirements of manufacturing or commercial nature.







1



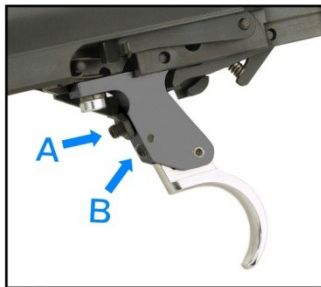
2



3



4



5



6



7



8



9



10



11